



Party Productions & Events!

Catering/Serving Rentals

Rental items may be reserved by filling out a rental contract and paying the total rental fee in advance. All rentals require a credit or debit card number as an insurance deposit for the items. Once all items are returned in the proper condition nothing is done with the card and that record will be destroyed. Length of rental is negotiable, depending on the items being rented, and the date/time/location of the event.

Late return of all rental merchandise is subject to \$10.00 each day the rental merchandise is not returned. If you call to let us know you'll be late before hand there will be no fee. All items are to be returned in a satisfactory and clean condition (ex. no wax on items) and in their original boxes.

Renters are to take good care of all rental merchandise and use it properly. Renters also need to verify that all items are there, and in good condition. The renter is also responsible to reimburse Party Productions for any rental merchandise that is lost, destroyed, damaged beyond repair, or stolen prior to its return.

The renter must pay Party Productions the required amount for the repair or replacement of rental merchandise, if such rental merchandise is damaged in any manner prior to its return.

Let us know if you would like to get a contract started. If you choose to start a contract for rentals over \$100 we will require a 35% , non- refundable deposit of the total cost to be paid at the time of reservation. The remaining balance of reservation cost will be payable within 10 days prior to the event. If you have any questions or concerns please feel free to contact us through email or by phone.

All conditions, terms, and prices are subject to change without notice.

1919 1st Ave North, Fort Dodge, IA 50501 • 515-576-5544 • 800-747-1169

partypro@partyproiowa.com

www.partyproiowa.com



Galvanized Igloo Drink Dispenser

10gal- \$20
5gal- \$12 3gal- \$9
*IGLOO1,2,3



5 Gallon Clear Beverage Dispenser

*DISP5CLEAR \$20



Bunn 2 Burner Coffee Maker

\$10.00 *BUNN2
Also Available, a 3 burner!
\$12.00 *BUNN3



100 Cup Coffee Maker

\$12.00
*COFFEE-100



30 Cup Coffee Maker

\$8.00
*COFFEE-30



5 Gallon Hot Cold Beverage Dispenser

\$14
*DISP5 (pictured)

10 Gallon *DISP10 \$16
2.5 Gallon *DISP2 \$12



Hot Beverage Dispenser Chafing Fuel

\$12.00
*HOTBEV



Faberware 55 Cup Coffee Maker

\$10.00
*COFFEE-55



3 Gallon Clear Acrylic Beverage Dispenser

\$15
*DISP3CLEAR



Plastic Black 48oz Thermal Pitcher

\$6.00
*PITCHER-THERM



Drink Dispenser 2 Compartment Insulated

\$16
*DISPENSE2



Plastic Pitcher

\$2.50
*PITCHERPL

Party Productions & Events Rentals

Asst Glass Punch or Serving Bowls
\$9.00 *SERVINGBOWL



Silver Punch Bowl Asst Styles \$20 *PUNCH-SILVER



5 Gallon Plastic Punch Bowl \$8.00 *PUNCH-S
10 Gallon Plastic Punch Bowl \$12.00 *PUNCH-L



Ice Bucket with Stand \$8.00
*ICEBUCKETSS, *ICEBUCKETSSILVER \$4.00 for Bucket only.
Clear Champagne Bucket (not Shown) \$4.00
*ICEBUCKETCLR



2 Gallon Gold Fountain \$30 *FOUNT-2GAL,
7 Gallon Fountain \$40 *FOUNT-7GAL,
3.5 Gallon Fountain \$35 *FOUNT-3.5GAL



12 QT Plastic Bowl with Vine Design \$6.00
*VINEBOWL-12



Plastic Punch/Serving Bowls
*BOWLPL1 5" tall 16" wide \$5.00
*BOWLPL2 6" tall 19" wide \$6.00



Silver Teapot \$7.00 *TEAPOT



Electric Heat Lamp \$16.00
*HEATLAMP



Tall Chafing Dish Soup \$15.00
*CHAF-SOUP



Glass Punch Bowls
L-R Styles A, B, C, all \$12.00 *PUNCH-GLASS



Modern Chafing Dish with Pots for Soup or Sauce \$16.00
*CHAF-POTS



Chafing Dish with Pots for Soup or Sauce \$16.00
*CHAF-POTS



Full Size Chafing Dish \$15.00 5 quart
*CHAF-FULLSIZE

*Each Chafing Dish Rental includes:
Stand, Water Pan, Food Pan & Lid.
Additional Food Pans can be rented at \$3.00 each.
Divided Pans are also available.
*PANHALF, *PANFULL*



Flat Round Chafing Dish 12" wide 4" deep \$14.00
*CHAF-RNDFLAT



Square Chafing Dish 12" wide 4" deep \$14.00
*CHAF-SQUARE



Round Chafing Dish \$15.00
*CHAF-RND



Snow Cone Machine \$35 *SNOWCONE



Snow Cone Machine Ice Grinder \$35
*SNOWCONE-IG



50ct Hot Dog Roller \$50 *HOTDOG-50
20ct Hot Dog Roller \$35 *HOTDOG-20



Popcorn Machine \$40.00
*POPCORN



Cotton Candy Machine \$40.00
*COTTONCANDY



18 Quart Roaster \$16.00
*ROASTER

Electric Soup Kettle \$16.00
*SOUPKETTLE



Popcorn Machine Cart \$12.00
*POPCART



Party Productions & Events Rentals



Cold Master with 1/2 Size Pans \$12.50
 *COLDMAST-RECT12
 Also available, Full size \$12.50
 *COLDMAST-FL



Cold Master with 1/3 Size Pans \$12.50
 *COLDMAST-RECT13



Cold Master Quart Size \$8.00
 *COLDMAST-QT



Beverage Table White/Black \$25.00
 *BEVTABLE



Cambro Tabletop 5' Salad Bar \$16.00
 *CAMBROTABLE



Deep Freeze Ice Cream \$60.00
 *ICECREAMFREEZER



Galvanized Tub on Stand \$16.00
 *TUBGALSTAND



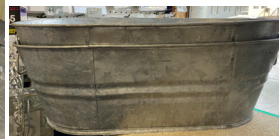
Galvanized Tubs \$10.00 *TUBGAL



Cambro Food Carrier Larger \$22 *CAMBRO2



Insulated 13x18x27 Beverage Bin \$15.00
 *BEVBIN



Galvanized Tub Smaller \$6.00
 *TUBGALSM



Keg/Cooler Cart \$18.00
 *KEG/COOLER



Black Bar 6'x30'x39.5", on casters, \$50.00
 *BARBLACK

Cambro Food Carriers \$18 each *CAMBRO
Cambro Dollie \$5 *CAMBRODOLLIE



Metal 2 Tiered Tray 8" Tall, 8.5" wide bot, 6" wide top. \$6.00
 *TRAYTIER



Insulated Barrel Drink Holder \$15.00
 *BARRELDINK



Plastic Food Tray \$10.00
 *TRAY-PLST2



Ice Chest \$45.00
 *ICECHEST



Black Bar Cambro \$45.00
 *BARBLACK2



Wilton 6 Tier Dessert Stand \$25.00
3 Tier \$18.00
 Holds 120 cupcakes
 *CUPCAKE *CUPCAKE-HALF



Three Tier Mirror Stand \$25
 Top 11.25"x17.5", Middle 24"x 15", Bottom 30.5" 20"
 Holds 110 cupcakes
 *MIRRORSTAND-3



Aluminum Tiered Cake Stands
 9" \$5.00 *CAKESTAND-9
 11" \$7.00 *CAKESTAND-11
 13" \$8.00 *CAKESTAND-13



Glass Cake Stand 2pc 10" wide \$7.00
 *CAKESTAND-GL



Anchor Hocking Glass Tiered Platter
 10" \$7.00 *PLATTER10-GL
 13" \$8.00 *PLATTER13-GL

Glass Cake Pedestal 4.5" Or 8.5" wide \$6.00
 *CAKEPEDESTAL-GL



Party Productions & Events Rentals



Sundae Cup
\$1.25 ea.
*SUNDAECUP



Sherbert Plain Stem \$0.85
*SHERBERT-PLAIN



Sherbert Bubble Stem \$0.85
*SHERBERT-BUBBLE



Sherbert Fancy \$0.90
*SHERBERT-FANCY



XL Champagne Glass \$4.00 ea.
*CHAMPAGNE-XL



Mason Jar Mug \$1.25 ea.
*MASONMUG



1 Liter Carafe \$1.50 ea.
*LITERCARAFE



Irish Coffee
8.5 oz \$1.25
*IRISHCOFFEE



25 oz. Brandy Snifter \$1.00 ea.
*BRANDY-SM
ALSO AVAIL:
70oz Brandy Snifter \$4ea
*BRANDY-XXL



Hurricane Glass \$1.50 ea.
*HURRICANEGLASS



Martini Glass \$0.85 ea.
*MARTINI



Traditional Margarita Glass 9oz \$0.85 ea.
*MARGARITA



Magana Grande Glass 27.5 oz \$0.85 ea.
*MAGANA



Coffee Cup Glass \$0.75 ea.
*CUP-COFFEE



Punch Cup \$0.75 ea.
*CUP-PUNCH



10 oz. Water Goblet \$0.85 ea.
*WATERGOBLET



Winchester Water Goblet \$1.00 ea.
*WINCHEST-WATER



Winchester Wine Goblet \$1.00 ea.
*WINCHEST-WINE



Wine Glass Bubble Stem 9oz \$0.85 ea.
*WINEBUBBLE



Red Wine Glass 10oz \$1.00 ea.
*WINERED10



Wine Glass For Bar 6oz \$0.75 ea.
*WINEBAR



Wine Glass 6oz \$0.75 ea.
*WINE6



6.5 oz. Wine Glass (pictured) \$0.75 ea.
*WINE6.5



Glass Beer Mug \$1.00
*BEERMUG



Pilsner 9oz \$1.00
*PILSNER



Bamboo Glass \$0.85
*GLASSBAMBOO



Arctic Highball \$1.00
*HIGHBALL



Nob Hill Glass \$1.00
*NOBHILL



Large Wine Glass w/ Metal Swirl \$1.25
*WINESWIRL



Bubble Stem Rhine Wine Glass 4oz \$0.65
*WINERHINE



Double Handled Glass \$0.80
*SUGARHOLDER



Footed On The Rocks \$0.85
*FOOTEDROCKS



Champagne Plain Stem \$0.85
*CHAMPANGE-PLAIN



Champagne Bubble Stem \$0.85
*CHAMPANGE-BUB



6 oz. Champagne Flute Tulip \$0.85 ea.
*CHAMPAGNE-TULIP



6 oz. Champagne Flute \$0.85 ea.
*CHAMPAGNE-6



4.5z Champagne Glass \$0.65 ea.
*CHAMPAGNE-4



Round Planter \$2.00 ea.
*ROUNDPLANT



Candy Dish Heart \$1.75
*HEARTDISH



Octagon Compote \$2.00
*OCTCOMPOTE

Silver Frosted Garden Bowl Stands \$3.00 w/Dish
\$2.00 Just Stand
*GARDENBOWLSTAND



Party Productions & Events Rentals



8" Circular Silver Tray
\$3.00
**SILVTRAY-C1*



10" Circular Silver Tray
\$3.00
**SILVTRAY-C1*



12" Circular Silver Tray
\$5.00
**SILVTRAY-C2*



12" Circular Silver Tray
\$5.00
**SILVTRAY-C2*



14.5" Circular Silver Tray
\$6.00
**SILVTRAY-C3*



15" Circular Silver Tray
\$6.00
**SILVTRAY-C3*



16" Circular Silver Tray
\$8.00
**SILVTRAY-C4*



16.5" Circular Silver Tray
\$8.00
**SILVTRAY-C4*



18.5" Circular Silver Tray
\$10.00
**SILVTRAY-C5*



22" Circular Silver Tray
\$12.00
**SILVTRAY-C6*



14"x10.5" Silver Tray w/Handles
\$8.00
**SILVTRAY-R1*



18"x14" Silver Tray w/Handles
\$10.00
**SILVTRAY-R2*



19"x 14" Silver Tray w/Handles
\$12.00
**SILVTRAY-R3*



Oval Silver Serving Platter
25x21 \$5 **PLATTERSILV*



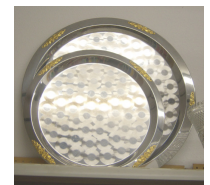
19"x 14" Silver Tray w/Handles
\$12.00
**SILVTRAY-R3*



23"x16" Silver Tray w/Handles
\$14.00
**SILVTRAY-R4*



Note: sizing does not include handles. All handled trays have little feet on the underside. Sizing may vary within an inch. They are real silver plated and some trays do have designs on surface.



Stainless Steel Trays
20" for \$5.00
and 25" for \$6.00
(only 2 available)
**TRAY-STEEL*



Silver Punch/Serving Bowls
2.5" tall 4" wide \$2.00
3.5" tall 6" wide \$3.50
5.5" tall 10" wide \$5.50
6.5" tall 12" wide \$7.00
**SILVBOWL-1, 2, 3, 4*



Silver Serving/Food Bowl 1.5" tall 6.5" wide
\$3.00
**SILVBOWL5*



13.5" Square Silver Beaded Tray
\$4.00
**SILVSQTray13*



Small Metal Pedestal Bowl
5.5" Tall, 2" Deep, 6.5" Wide
\$2.50 **PEDESTALBOWL*



11" Square Silver Beaded Bowl
\$4.00
**SILVSQBOWL11*

Glass Appetizer/Dessert Tray \$4.00 **TRAY*
ALSO AVAIL:
Decorative Glass Cup
\$0.50ea **CUP*



Party Productions & Events Rentals



13" Gold or Silver Charger
\$1.75
 *CHARGER



Glass Plates, Bowls, Cups *Dish
\$6.00 10ct single style



Metal Cream Servers
\$0.80 ea. *CREAMSERVER



Small Glass Bowl
2.5" Tall, 4" Wide
\$1.00 ea. *BOWL



Steak Knives 10ct
single style
\$5.00
 *STEAKKN



Utensils 10ct
single style
\$5.00
 *UTENSIL



Covered Oval Serving Dish
2" Deep approx 11" Wide
\$4.00 *COVEREDDISH



Silver Butter Dish
\$2.00
 *BUTTERDISH



ButterWarmer
\$1.75
 *BUTTERWARMER



Salt and Pepper
Shakers Set \$0.80
 *SALTSHAKERSET



Condiment Holder
Centerpiece \$3.50
 *CONDIMENTHOLDER



Shrimp Bowl
4.5" Tall, 5" Wide
\$1.25 ea.
 *BOWL-SHRIMP



Shell Cracker
(Lobster/Crab)
\$1.75
 *SHELLCRACKER



Party Productions & Events!

Floral & Greenery *Rentals*

All conditions, terms, and prices are subject to change without notice.

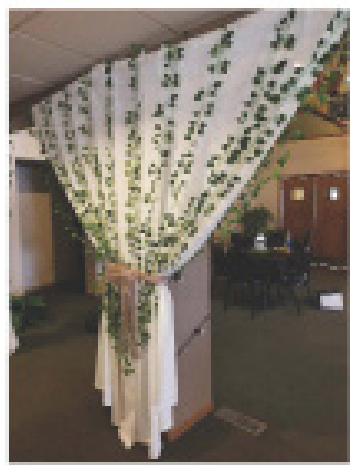
1919 1st Ave North, Fort Dodge, IA 50501 • 515-576-5544 • 800-747-1169

partypro@partyproiowa.com

www.partyproiowa.com



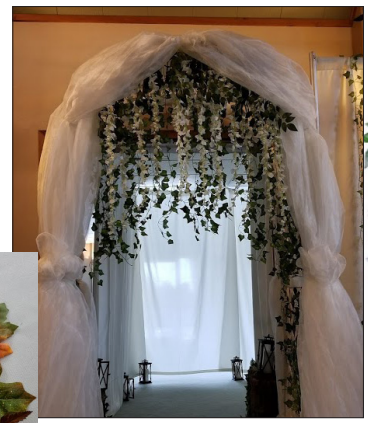
Asst Silk Florals
\$.75 ea or \$4 for 6
**FLORAL*



Plastic Ivy \$1.75 a Strand
**GARLAND-IVY*



Asst Fall Floral/Leaves
Loose \$3.50 per bag
**FALLFLORALBAG*



White Wisteria Branches
\$0.75 Each Strand
**WISTERIA*



Silk Eucalyptus Garland 6'5" With Roses
Champagne, Ivory, Cream
\$3.50 Each Strand **GARLAND-FLREUCA*



Maple Leaf w/Glitter
Garland 6'
\$3.50 Each Strand
**GARLAND-MAPLE*



White Wisteria Garland 7.2'
\$3.50 Each Strand
**GARLAND-WIST*

GrapeVine Wreath Light Up
18" \$4.00
**LIGHTGRAPEVINE*



Party Productions & Events Rentals



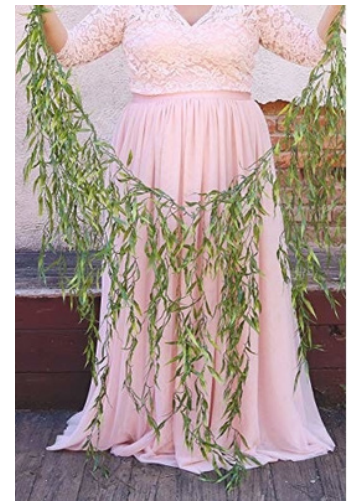
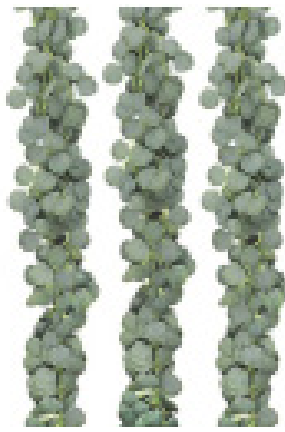
Lambs Ear Eucalyptus
\$3.50 Each Strand
* GARLAND-LAMB



Plastic Eucalyptus Garland
6' \$3.50 Each Strand
*GARLAND-PLEUCA



Silk Eucalyptus Garland 6'
\$3.50 Each Strand
*GARLAND-SLKE



Weeping Willow Garland
\$3.50 Each Strand
*GARLAND-WILLOW



Willow Bamboo Greenery
5.7'
\$3.50 Each Strand
* GARLAND-BAMBOO



6.5ft/2m



Silk Eucalyptus
Vine Garland 6.5'
\$3.50 Each Strand
*GARLAND-SLKEV



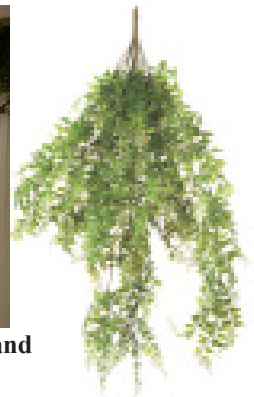
Moss Greenery Garland 5'
\$3.50 Each Strand
* GARLAND-MOSS



Springeri Greenery Garland
\$3.50 Each Strand
*GARLAND-SPRING



Buckler Fern Draping \$3.00 Each Strand
*FERNBUNCH





Commercial Table Linen Rentals

White, Black, Ivory, and Select Colors Table Linens \$9.00
 Available in Sizes: 60x102 (6' Rectangular Table), 85x85 Square, 90" Round (5' Round),
 60x126 (8' Rectangular Table) *TC60X126 *TC90R *TC60X102 *TC85X85

Black and White Gingham Napkins.....\$1.00
 *NAPKINGING

Commercial Linen Napkins 20"x20" \$0.80
 (Available in White, Black, Ivory, and Select Colors)
 *NAPKIN20X20

Banquet Chair Covers \$2.50 Please Inquire about available colors.
 *CHAIRCOVER

Folding Chair Covers \$2.00 (Available in Black & White)
 *CHAIRCOVER

60x120 Red & White Gingham or Black & White Gingham Linen.....\$10.50
 *TCGING

White & Ivory Basic Lace Banquet/Round Overlay \$9.00
 *TCLACE

90x156 8' Banquet Table to Floor Linen\$15.00
 (Including Black, White, Ivory & Select Colors)
 *TCTOFLOORS

120" Round Linen for 5' Round to Floor or Cocktail to Floor\$15.00
 (Including Black, White, & Select Colors)
 *TCTOFLOORS

Sequin to Floor Linens - Indoor Use Only- No Wax..... \$18.00
 *TCSEQUIN

Spandex Cocktail Linens for Highboy Table.....\$9.00
 (Including Black, White, Chocolate & Select Colors)
 *TCSPANDEX

Petal 120" Round Linen\$16.00
 *TCPETAL

Serpentine Table Linen \$12.00

Linen with Topper \$15.00
 *SERPLINEN *SERPLINENTOP

Specialty Linen Rentals

Lace Macrame Vintage Tablecloth 51x51\$12.00

Special Order Colored 8' Banquet Linens 72"x120"or 5' Round Table Linens 90"
 Please Inquire about available colors. Prices may vary.

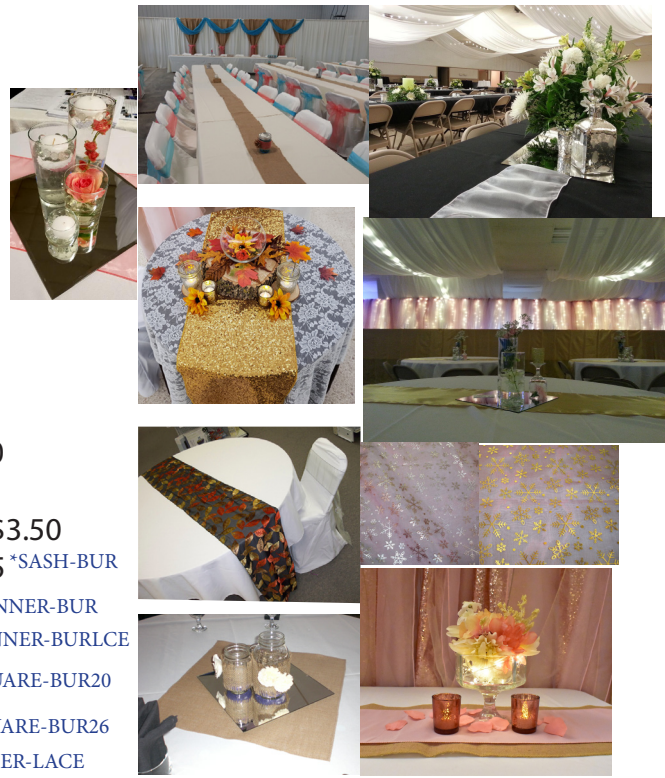
Special Order Colored 90"x156" To Floor 8' Banquet Table Linens/120" To Floor
 Please Inquire about available colors. Prices may vary.

Sequin and Specialty Linens\$12.00 - \$20.00
 Please Inquire about available colors.



Event Linen Accents

Organza Sheer Sash or Table Runner	\$1.75
Inquire about available colors. *RUNNER-ORG	
Polyester Poplin Sash approx 7"x104"	\$2.25
Inquire about available colors. *SASH-POPLIN	
Polyester Poplin Table Runner approx 12"x108".....	\$2.75
Inquire about available colors.*RUNNER-POPLIN	
Satin Sash approx 8"x108".....	\$2.25
Inquire about available colors.*SASH-SAT	
Satin Table Runner approx 12"x108"	\$3.00
Inquire about available colors. *RUNNER-SAT	
Sequin Table Runners - Indoor Use Only- No Wax.....	\$5.00
Inquire about available colors. *RUNNER-SEQ	
Decorative Leaf or Snowflake Runner - No Wax on Runner	\$3.50
Inquire about available colors. *RUNNER-DECOR	
Burlap Chair Ties approx 7"x108".....	\$2.75
Inquire about available colors. *SASH-BUR	
Burlap Runners 12"x108".....	\$3.00
Inquire about available colors. *RUNNER-BUR	
Burlap with Lace Runners	\$4.00
Inquire about available colors. *RUNNER-BURLCE	
20"x20" Burlap Square	\$1.75
Inquire about available colors. *SQUARE-BUR20	
26"x26" Burlap Square	\$2.00
Inquire about available colors. *SQUARE-BUR26	
Lace Runner	\$3.00
Inquire about available colors. *RUNNER-LACE	
Red&White or Black&WhiteGingham Runers.....	\$3.00
Inquire about available colors. *RUNNER-GING	



Pipe & Drape

Pipe sections are available for **\$16** per 8x 6-10ft section (most used). **\$22** per 8x 8-14ft section (for longer runs).

\$8 3x6-10ft section divider (for setting up booths). *PIPE *PIPEXL *PIPEDIVIDE

Drape sections are available for **\$6** for 5x8ft (most used) or **\$5** for 4x8 ft (more see thru and textured) piece of fabric in black, ivory, white or asst colors (see associate). **\$2.50** for 3x 3ft divider pannels (more see thru and textured).

We recommend 3-4 panels per 8-10ft section give attractive fullness. If items come back soiled or damaged beyond normal wear/tear, then a cleaning/maintenance fee will be assessed. *DRAPE

Sheers for Backdrop: 4' x 10' rent for **\$5.00** a sheer (more for swooping on top) or 8' x 16' rent for **\$8.00** a sheer (most used). Including a variety of colors. 2 - 3 panels per 10ft section give attractive fullness. Please inquire about available colors.Great for layering or swooping effect. *SHEER

4'x8' Burlap Backdrop Panels rent for **\$7.50** each. *DRAPE-BURLAP

Sash Curtains available to rent in 10' sections. Rent required sashes at \$0.40 off /sash for customization. (Must come back unassembled. Additional Labor fee will apply is we have to unassembled) \$0.40 off/sash + \$60-\$80 labor depending on sash amount if we assemble them. See associate for any questions.*SASHCURTAIN

*UPLIGHT

*LIGHTCURTAIN

*XMASLIGHT

LED uplights rent for **\$20.00** each. Fairy Light Curtain for 10' Section of Pipe rent for **\$22.00**. White Cord White Christmas light strands **\$9.00**. White cord White Icicle lights **\$11.00**. *ICICLELIGHT

Light curtain and light strands MUST come back as they went out other wise there will be a maintenance fee applied.



Tables and Chairs			
	Day	Week	Dimensions
8' Banquet Table (30"x8') *TABLE8	\$10.00	\$15.00	30"x96"
5' Round Table (60") *TABLE5R	\$11.00	\$18.00	60"x60"
8 Chairs fit around a 5 foot table comfortably.			
Black Chair *CHAIR-BLK	\$1.60	\$3.00	
White Chair *CHAIR-WHITE	\$1.90	\$3.60	
Black Cocktail Table *COCKTAILTABLE	\$13.00	\$16.00	30"d x 40.5" h
Pedestal Table *PEDESTALTABLE	\$13.00	\$16.00	30"d x 30"h - 40.5" h
Available in Cocktail Height and Regular			
7' Serpentine Table *TABLESERP	\$12.00	\$18.00	
With Topper as Shown *SERPTOP	\$15.00	\$22.00	
Serpentine Black Linen Tablecover *SERPLINEN	\$12.00	Brown Wooden Chair Saloon Style *CHAIR-WOOD	\$7.00
Topper Black Linen Tablecover *SERPLINENTOP	\$3.00	Wood Top Metal Barstool 2 heights *BARSTOOL1	\$6.50
Barstool *BARSTOOL	\$8.00	\$12.00	
5' Round Kids Table \$11.00 *TABLEKID		Kids Chairs \$0.75 *CHAIR-KID	
5' Half Circle Table *TABLEHALF	\$7.50	Conference Table 18x72 *TABLECONF6	\$10.50
6' Round Table *TABLE6R	\$14.00	Conference Table 18x96 *TABLECONF8	\$12.00
4' Rect. Table *TABLE4	\$6.00	6' Rect. Table *TABLE6	\$8.50



Black Metal Frame Chair
 (frame is Black)
 Also available in all White



Black Barstool



Tall Pedestal Table



Wood Top Metal Barstool - 2 heights available



Short Pedestal Table



Brown Wooden Chair Saloon Style



Black Cocktail Table

Minimum Delivery & Pickup (for Fort Dodge) is \$60.00. Delivery and pickup price is determined by location mileage and amount of items rented.



7' Serpentine Table



Heart Table \$10.00
 *TABLEHEART



Round Linen for Cocktail to floor



Spandex Cocktail Linens

Tents

Let us know if you would like to get a contract started. If you choose to start a contract we will require a 35% , generally non- refundable deposit of the total cost to be paid at the time of reservation. The remaining balance of reservation cost will be payable within 10 days prior to the event. If you have any questions or concerns please feel free to contact us through email or by phone.

Tent setup & teardown included in price. Delivery charges will apply. In town delivery \$30. In town pick up is \$30. Mileage = Distance in miles x \$8.00. All delivery and pickup prices will be evaluated based on amount of items rented. For Party Productions crew to set up tables and chairs, additional fees include \$0.50/chair to setup and \$0.50/chair to tear down. For tables, \$0.75/table to setup and \$0.75/table to tear down.

Sides- Additional \$7 per side we set up, \$7 per side we tear down, \$14 for both.

Size	Price	People Capacity	Fits	Sq. Foot.
20 x 20	\$350.00	60 - 70 standing	6 - 8' Banquet Tables or	400
*TENT20X20		40 - 48 sitting	5 - 5' Round Tables	
20 x 30	\$400.00	94 - 110 standing	9 - 8' Banquet Tables or	600
*TENT20X30		48 - 72 sitting	6 - 5' Round Tables	
20 x 40	\$500.00	130 - 160 standing	12 - 8' Banquet Tables or	800
*TENT20X40		64 - 96 sitting	8 - 5' Round Tables	
40 x 40	\$1,150.00	267 - 320 standing	24 - 8' Banquet Tables or	1600
*TENT40X40		160 - 192 sitting	20 - 5' Round Tables	
40 x 60	\$1,750.00	400 - 480 standing	36 - 8' Banquet Tables or	2400
*TENT40X60		240 - 288 sitting	30 - 5' Round Tables	
40 x 80	\$2,200.00	534 - 640 standing	48 - 8' Banquet Tables or	3200
*TENT40X80		320 - 384 sitting	40 - 5' Round Tables	
40 x 100	\$2,650.00		60 - 8' Banquet Tables or	4000
*TENT40X100		400 - 480 sitting	50 - 5' Round Tables	
40 x 120	\$3,100.00		72 - 8' Banquet Tables or	4800
*TENT40X120		480 - 576 sitting	60 - 5' Round Tables	
40 x 140	\$3,550.00		84 - 8' Banquet Tables or	5600
*TENT40X140		560 - 672 sitting	70 - 5' Round Tables	
40 x 160	\$4,000.00		96 - 8' Banquet Tables or	6400
*TENT40X160		640 - 768 sitting	80 - 5' Round Tables	
20' Tent Sides Solid *SIDE	\$30	20' Tent Sides Windowed *SIDEWINDOW		\$40

When reserving any tent, please tell us about the location; if it is grass or asphalt, if there are trees or power lines. Holes drilled in asphalt cost \$8 per hole. Holes drilled in concrete including hardware is \$10 per hole. We refill them upon completion



40 x 60 Tent



20 x 30 Tent

Price DOES NOT include ceiling, lighting, drapes, or sides. Quotes available.



Tent with custom pole covers, ceiling & lights



20 x 20 Tent



40 x 120 Tent



Party Productions & Events!

1919 1st Ave North, Fort Dodge, IA 50501
 515-576-5544, 800-747-1169
 partypro@partyproiowa.com
 www.partyproiowa.com

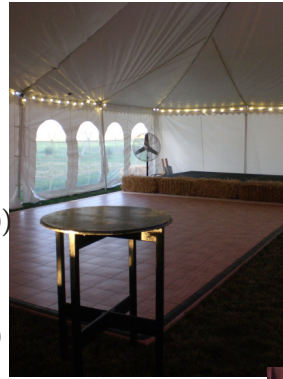
Dance Floor

12' x 12' Dance Floor \$216.00
 (Subfloor for Outdoor Use 16x16 \$102.40)
 Holds approx 30 people

15' x 15' Dance Floor \$337.50
 (Subfloor for Outdoor Use 16x16 \$102.40)
 Holds approx 50 people

18' x 18' Dance Floor \$486.00
 (Subfloor for Outdoor Use 20x24 \$192)
 Holds approx 70 people

Breakdown is \$1.50 per square foot and \$0.40 per square foot of subflooring, dance floor comes in 3' x 3' sections. Cleaning fee included in price.
 *DANCE *SUBFLOOR approx 648 1'square pieces available
 Party Productions does the setup and tear down of floor. In Town is \$60.00. Out of Town is Mileage x \$4.00
 For the floor only^



Staging

Dance Floor is to be under a tent or indoors ONLY

4' x 8' Stage Deck with Adjustable Legs 16", 20", or 24" & 32" - 40" \$55.00 per Section
 *STAGE4X8
 Stairs 16" or 24" *STAIR \$15.00 each



LED RGB Uplight \$20.00 each
 *UPLIGHT
 40' LED White Cord Event Lights \$30.00
 *LIGHTWHT
 50' LED Black Cord Event Lights \$30.00
 *LIGHTBLK

Price Quotes are available for our
 Tent and Event Ceilings.



Keg/Cooler Trailer

Non-Revenue Generating Events \$200 for personal use. \$275 Revenue Generating Event (ex. Pickup Friday - Return Sunday) Additional \$50 (personal) \$75 (Revenue Generating) fee will apply per added day.

2" Ball Hitch. 110 Volts *TRAILER

Trailer 1: Outside 14'6" L x 10'7" H x 8'6" W Inside 9'2" L x 8'7" H x 6'2" W Will hold approximately 30-35 kegs. There are 8 tapper spigots, 4 on each side of the trailer. 1 Tank of CO2 Provided.
 1 Tank of CO2 Provided.





Party Productions & Events!

Decorations & Misc Rentals

Rental items may be reserved by filling out a rental contract and paying the total rental fee in advance. All rentals require a credit or debit card number as an insurance deposit for the items. Once all items are returned in the proper condition nothing is done with the card and that record will be destroyed. Length of rental is negotiable, depending on the items being rented, and the date/time/location of the event.

Late return of all rental merchandise is subject to \$10.00 each day the rental merchandise is not returned. If you call to let us know you'll be late before hand there will be no fee. All items are to be returned in a satisfactory and clean condition (ex. no wax on items) and in their original boxes.

Renters are to take good care of all rental merchandise and use it properly. Renters also need to verify that all items are there, and in good condition. The renter is also responsible to reimburse Party Productions for any rental merchandise that is lost, destroyed, damaged beyond repair, or stolen prior to its return.

The renter must pay Party Productions the required amount for the repair or replacement of rental merchandise, if such rental merchandise is damaged in any manner prior to its return.

Let us know if you would like to get a contract started. If you choose to start a contract for rentals over \$100 we will require a 35% , non- refundable deposit of the total cost to be paid at the time of reservation. The remaining balance of reservation cost will be payable within 10 days prior to the event. If you have any questions or concerns please feel free to contact us through email or by phone.

All conditions, terms, and prices are subject to change without notice.

1919 1st Ave North, Fort Dodge, IA 50501 • 515-576-5544 • 800-747-1169
partypro@partyproiowa.com www.partyproiowa.com



Round, Swirl, Frosted, Roly Poly, Square, Oyster, Tall Tapered, Square Faceted, Flower Pot, Round Cylinder Votive \$0.65 ea. Silver, Copper, Gold Mercury Spotted & Rose Gold Textured Votives \$0.75 ea. *VOTIVE *VOTICEMERC



Geometric, Flared Lined, Fluted Ribbed, Brilliant, Heart, Pointed Frost Votive Holder \$0.80 ea. *VOTIVE2



Angle Lights \$0.75 ea. Floating Votive Holder \$0.80 ea.

*ANGLELIGHT,
*VOTIVEFLOAT



6", 12" 18" Votive Holders \$5.00 ea. *SETB



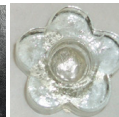
Stemmed Ribbed Votive Cup \$0.85 each



Asst. Taper Holders \$0.60 *TAPERHOLDER



3 Candle Lotus Centerpiece \$2.00 ea. *3CANDL



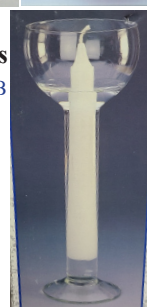
Glass Candle Sticks \$0.80 each *CANDLESTICK



Glass Unity Candle Set \$3.00 set *UNITY



2.75"x2.25" Pedestal Candle Holder \$0.85 *CANDLECLEAR



Floating Candle Holder \$1.50 each *FLOATCAND



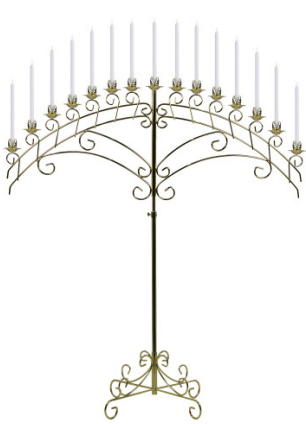
Ribbed Taper Candle or Pillar Candle Holder \$0.60 *TAPERHOLDER
4"x5" Silver Beaded Candle Holder \$1.00 *CANDLESILV



Cupcake or Votive Candle Stand \$6.00 *CUPCAKE/VOTIVE

Party Productions & Events Rentals

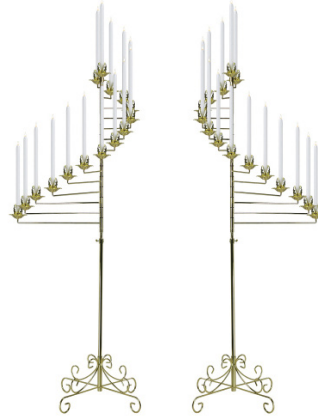
Candelabra Rental prices do not include cost of candles.



Brass Fan Candelabra *BRASSFAN \$18.00
6 Candle Add-on Fan \$4.00 *FANADDON



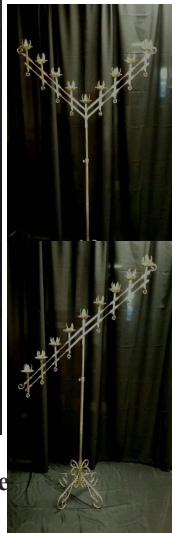
Brass Tree Candelabra Pair \$20.00
 *CANDLETREE



Brass Spiral Candelabra Pair *CANDLSPIRAL \$22.00EA
 *CANDLFAN



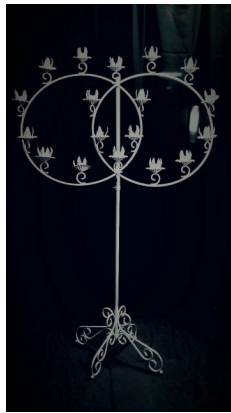
Brass/ Silver/ White Finish Angled 7 candle Candelabra \$10.00 *CANDLEANGLE



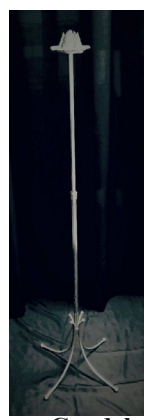
Brass Heart Candelabra \$18.00 EA *CANDLHEART



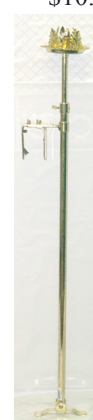
Brass Double Ring Candelabra Pair/ Double Heart \$20.00 EA
 *CANDLRINGDOUBLE



Single Brass Candelabra \$5.00 *CANDLESSINGLE



Brass Aisle Candelabras \$6ea \$10 pair
 *CANDLAISLE



Candle Lighters
 Single \$4.00
 Pair \$6.00
 *CANDLLIGHTER



3 Candle Candelabra in White/Gold \$6.00 *CANDLEABRA3



Tabletop Candelabras
 \$6.00 each \$10.00 a Pair
 *CANDLTABLE



LED 5" Pillar Candles (Batteries Included) \$1.75 each
 *LEDPILLAR



LED Water Activated Floating 1.5" White Tealight or 3" Ivory Candle (Batteries Included)
 \$0.60 ea. *LED1.5T
 \$0.85 ea. *LED3F



Bronze & Gold Candle Holders
 \$4.00 each \$10.00 set
 *UNITY SET

Ivory Lantern \$4.50 - 14"
White small lantern \$3.50 - 9.5"
White large lantern \$4.50 - 14"
Black Lantern \$4.50 - 11"
Broze Lantern \$5.00- 15"

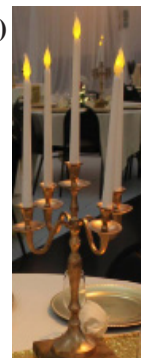


Stake Lantern \$5.00 Each
 *LANTERNM *LANTERNLG *LANTERNB *LANTERNSTAKE



Footed Votive Insert for Candle Holders \$0.75
 *FOOTEDVOTIVE

LED 12" Taper Candles (Batteries Included)
 \$1.50 each
 *LEDTAPER



Party Productions & Events Rentals



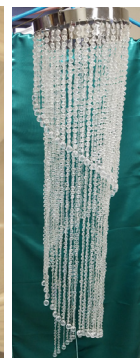
Lighted Branches
\$3.00
*LIGHTBRANCH



Silver Warm Light up Ribbon \$6.00 each
*RIBBONLIGHT



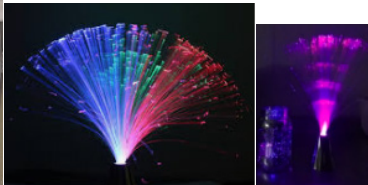
LED Moonlights 4.5'
Submersible with reduced battery life 7-8 hours. Generally 12 hours of light.
\$1.75 *LEDMOONLIT



2 - Piece Tiered or Swirl Acrylic Bead Chandelier
\$14.00 *CHAND



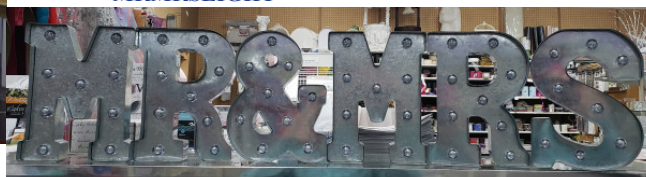
\$15 6' LED Light Up Tree
\$20 8' LED Light Up Tree
*LIGHTTREE1 *LIGHTTREE2



Fiber Optic \$2.50 ea.
*FIBEROP
Light Up Sign
"Mr&Mrs" or "Mr&Mr" or "Mrs&Mrs"
\$10.00
*MRMRSLIGHT



Table Top Spotlight
5.5" Tall \$5.00 each
*TABLESPOT



Wooden Mr Mrs Letters
8" Tall Per Letter \$7.50
*MRMRSSIGN



Bronze Candle Chandelier
(candles not included)
\$8.00 *CHANDI

Mini Vases



4.75" (96) \$0.85 7" (96) \$0.85 8" (64) \$0.85



2.3" (60) \$0.75 2.75" (70) \$0.75 3" (60) \$0.85



4" (96) \$0.85 4.25" (72) \$0.85 4.5" (48) \$0.85 3.25" (144) \$0.85



Mason Jar Chandelier
(candles not included)
\$10.00 *CHAND2

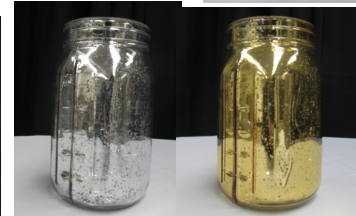


***MASON8** Jam 8oz Mason Jar \$0.80
***MASON16** 16oz Mason Jar Clear/Blue \$1.00
***MASON32** 32oz Mason Jar Clear/Blue \$1.50

3.25x5.25 Bubble Mason Jar \$1.00 *MASON16
Milk Bottle \$1.00 ea *BOTTLEMILK



Mason Jar Tea Light Holder
Silver or Gold \$0.50 ea.
*TEALIGHTHOLD



Glittering Gold & Silver Mason Jars \$1.75ea
*MASONGOLD
*MASON SILV

Party Productions & Events Rentals



Ribbed or Reg Wine Bottle
\$1.75 *BOTTLE RIB



8" Glass Jug
\$1.50 ea.
*8JUG



Bud Vases Assrt \$1.50 ea.
*VASE



8" Glass Cube
\$1.75 ea.
*VASECUBE8

Metal Vase
28.5" TALL
\$5.00
*VASEMET



6"x4.75" Sq Glass Vase \$2.50
*VASESQ6X4.75

4.5" x 9.625" Sq Glass Vase
\$3.50 *VASESQ9X4.75
12"x4.75" Sq Glass Vase
\$4.50 *VASESQ12X4.75



10", 8.75", 7.5", 6" Glass Cylinders
\$1.75 ea.
*CYL6, *CYL7.5, *CYL8.75, *CYL10



9.5" Cylinder Vase
\$1.75
*CYL9



3.5"x20" Cylinder Vase
\$4.00
*CYL20



4"x4" Cylinder Vase
\$1.25
*CYL4



4.5"w"x3"h Cylinder Vase
\$1.25
*CYL4.5



24" Eiffel Tower Vase \$5.00
*VASEEIFFEL



TABLE PLACECARD HOLDER 12"
\$0.75 ea
*PLACECARDHOLD



3.75"x6" Sq Glass Vase
\$2.50 *VASESQ6X3.75
3.75"x8.25" Sq Glass Vase
\$3.00 *VASESQ8X3.75
3.75" x 10.25" Sq Glass Vase
\$3.50 *VASESQ10X3.75
3.75"x14" Sq Glass Vase
\$4.00 *VASESQ14X3.75



Open Cylinder
\$1.25 ea.
*CYLOPEN



Octagonal Planter
\$1.75 ea.
*OCTA-PLANT



Medium 5 3/4" Bowl
\$1.75 ea.
*BOWL5



Octagon Compote
\$1.75
*OCTCOMPOTE



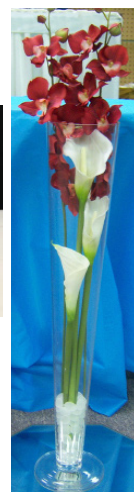
Bubble Rose Bowl \$1.75 ea.
*ROSEBUBBLE



Candy Dish Heart \$1.75
*HEARTDISH



Globe Frosted Striped Bowl
\$3.00
*BOWLFROST



8" Swirl Hurricane \$4
*HURRICANE8



12" Hurricane \$3.00 ea.
8" Clear Hurricane \$5.50
\$4 *HURRICANE8 *HURRICANE12
*HURRICANEOPEN

G6 Vase 28" Tall
(flowers not included)
\$6.00
*VASEG6



Bubble Bowl
\$1.75 ea.
*BUBBLEBOWL



Swirl Rose Bowl, Fluted Rose Bowl & Fish Bowl \$1.75 ea.
*ROSESWIRL, *ROSEFLUTE, *BOWLFISH



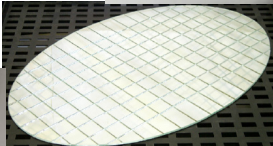
Small 5" Mirror
\$1.75 ea.
Round or Square
*MIRROR-SM

Wooden Charger 5x16.5
\$5.00
*WOODCHARGER3

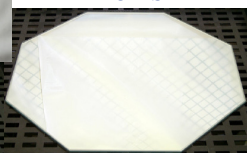


Pedestal Rose Bowl \$1.75 ea.
*ROSEPEDESTAL

7.5" Bubble Bow with Insert
\$1.25 ea.
*BUBBLEBOWLI



Mesh Backed Oval Mirrors \$3.00
*MIRROR-OVALMESH



Shaped Mirrors \$3.00 ea.
Round *MIRROR-CIRCLE
Octagon *MIRROR-OCT
Square 12" *MIRROR-SQ
Heart *MIRROR-HEART



Wooden Charger
Reg: \$2.50
Small: \$1.50
*WOODCHARGE1
*WOODCHARGE2



Party Productions & Events Rentals



White Window Panel Gold Frame
 (undecorated & half of shown) **Hard Plastic \$10.00**
 \$12.00 each *WINDOW *FRAME



Metal Ornate Arch
\$40.00
 *ARCHORNATE



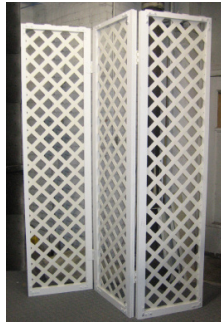
Metal Arch
 White or Gold
\$30.00
 *ARCHMET



Double Panel
 1 Panel 4' x 8',
 2 Panels
 *LATTICE DOUBLE



1-2-1 Panel
 *LATTICE121

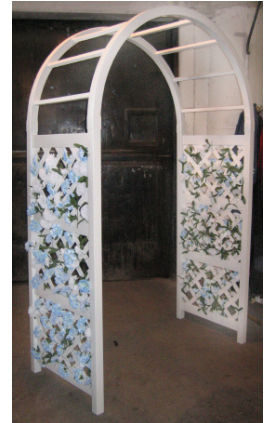


3-Way Panel
 *LATTICE3

Undecorated Lattice Wall All 3 Styles
 \$30.00 a Section



Lattice Arch \$40.00
 80" Tall, 38" Deep, 60" Wide
 *ARCHLATTICE



Theatrical Arch
\$40.00 *ARCHTH



Wedding Canopy
 Includes, 4 bases, 4 tubes, lights and sheers **\$50.00**
 *WEDDCANOPY



Brown 3-Way Panel
 *LATTICE3



Wooden Spool (not decorated) \$3.000
 *WOODSPOOL



Whiskey Barrel Stand \$40.00
 (Cakes in photo by Hummingbird Confections)
 *WHISKEYBARREL
 see associate about barrel table ideas



Rent a 10'x10' tent frame only and decorate for a canopy look.
 \$100 plus delivery and pickup
 *TENTFRAME
 Larger sizes available!



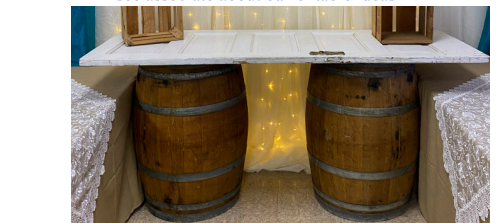
Kneeling Benches
\$25 for the pair
 *KNEELBENCH



4' Rustic Ladder \$6.00
 *LADDER



Wood Crates (asst sizing/looks)
\$7.00
 *CRATE



Assorted Milk Jugs \$7.00
 *METALJUG



Small Assorted Barrels \$7.00
 *BARRELSM
 REV 1-2025

Party Productions & Events Rentals



Black Wooden Easel
\$7.00 *EASEL2



Presentation Easel
\$8.00 *EASEL

76" Illuminated Column Pair \$26.00 *EASELORNATE
(pictured) *COLUMN76
36" Illuminated Column Pair \$22.00
*COLUMN36

Metal Ornate Easel
\$9.00



Metal Tabletop Easel \$6.00 *EASELTABLE
Wooden Tabletop Easel \$6.00 *EASELTABLE



Round Wicker Flower Holder
(asst sizes) \$8.00 *WICKERFLOWER



Chalk Board Sign
\$10.00 *CHALKSIGN1



Trifold Picture Holder Frame \$20 *PHOTOFRAME



Wicker Flower Basket
\$6.00 *WICKERBASKET



Wicker Bridal Register Podium \$12.00 *PODIUMWICKER



Gold Branch Bundles \$4.00 *GOLDBRANCH
Chalk Board Sign \$15.00 *CHALKSIGN



Wishing Well Card Box \$15.00 *WELL-W



Birdcage Card Box \$6 *CARDBOX-BIRD



Treasure Chest Card Box \$20 *CARDBOX-TREASURE



Card Box \$15 *CARDBOX



Mailbox Card Box \$35.00 *MAILBOX
REV 1-2025

Party Productions & Events Rentals



Brown Patio Furniture
Couch \$30 Chair \$25
*PATIO1 *PATIO2



Assorted Couches/Chairs
Couches \$30-\$50 Chairs \$12-\$35
*TH-PROP



Theatrical White & Silver Rose Bench \$25
*BENCH



Wooden Bench
Theatrical \$16
*TH-PROP



Black Barstool
\$8.00 each *BARSTOOL



Wooden Prop Stairs \$10.00
*STEPWOOD



Tiki Bar
(Uses 9/16" wrench)
\$100.00 *TIKIBAR1



Tiki Bar Less
Elaborate \$50.00
*TIKIBAR2



Wood Podium \$12.00
*PODIUMWOOD



Assorted Plastic Garbage Bins
\$8.00
*GARBAGE



Assorted Theatrical Planted Bushes \$7.00
*FICATREE



A. Ice Sculpture Tray & Expander
B. Lighted Base

To rent the set \$30. Lighted base with plastic tray on top to hold ice with a drain to remove water as it melts. Ice molds sold separately.

*ICETRAY LG, *ICETRAY SM
To rent a tray only \$15



36" Chandelier available in multiple colors and styles.

\$6.00 *CHANDEL

4, 6, or 8 foot stands \$6.00

*CHANDSTAND

A tube covered in mylar \$10

*CHANDSTAND-MYLAR



Q-Line metal bases & tape

\$18.00 per set,

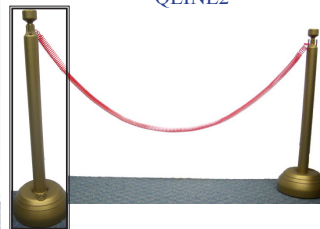
*QLINE3



Q-Line metal bases & rope off \$15.00

per set,

*QLINE2



Q-Line plastic bases & rope off \$10.00

per set, *Velvet

rope also available

*QLINE



Palm Tree 6'9" \$15.00
*PALMTREE



Projector Screen

\$7.00

*SCREENPRO



Red Carpet Runner
approx 35' \$20.00

*REDCARP



Red Carpet Runner

3'x50' \$40.00

*REDCARP50

Party Productions & Events Rentals



Custom Heart Balloon Stand
\$20 for stand only Takes approx. 80 11" Balloon or 355 5" Call for Pricing.
*HEART



Custom Balloon Arch
\$20 for stand only Takes approx. 132- 11" Balloons Call for Pricing.
*BALLOONARCH



Balloon Column
\$10 for Stand 32 11" Latex
*BALLOONCOLUMN



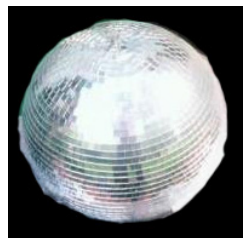
Balloon Centerpiece
Stand decorated base. Balloons can be any color. \$6.00
*BALLOONCENTER



Loomie Dish Centerpiece
decorated, white or ivory base. Balloons can be any color. \$8.00
*LOOMIE



Air Machine
\$18.00
*AIRMEN



16" Disco Ball & Turner \$25
*DISCO
16" Mirror Ball, Turner, & Pin Spotlight \$29
*DISCO-SPOT



Ceiling Turner
\$5.00
*SPINNER



Snow Machine Kit Includes: Hurricane II Fan, Little Blizzard Machine, Remote Control, Universal DMX, Clamps & Cables to hang it
*SNOW \$500.00

To rent Little Blizzard Alone: \$300.00
*SNOWFLUID Liquid Snow: \$58.90

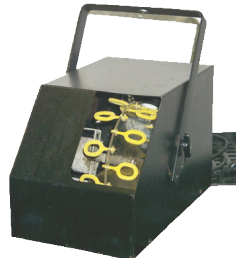


Button Machine \$16
*BUTTON MACHINE
Button Parts 2" \$1.25
BUTTON PC
Button Parts 3" \$1.50

Industrial Fan
*FANINDUS \$35.00
Indoor or Under Tent Use ONLY



Le Pouf Favor Maker
Assists in holding and tying tulle favors. \$15
*FAVORMAKER



Bubble Machine with Fill \$18.00
*BUBBLEMCN Extra Fill \$6.00
*BUBBLEJU



Fog Machine
\$38.00 *FOGMACHINE
Extra Fluid Available for Purchase



Gobo Projector LED
\$12 - Also order your custom design for your event! *GOBO

Globe Light Strand
\$25
*GLOBELIGHT



Z-Shaped Extendable Clothes Racks (59" long, 68"-78" tall)
\$12.00 *ZRACK
Also Available, Round, 4-prong, and Rectangular Clothes Rack \$12
*RACKCLOTHES



Moonflower



CanLight



Pinspot



Chauvet Vue 1.1 Sound Activated Moonflower DJ Light
\$20 (LEFT) *MOONFLOWER Mood effect light, perfect for dance floors. The LED Dance Floor Light is a DMX controlled LED moonflower. It allows the user to display many different light patterns and effects. It can be run in a stand-alone mode or connected to a DMX controller for full functionality.

Chauvet 38 LED Pro Par Can Light \$14 (CENTER) *PAR38
This powerful LED light fixture is perfect for lighting small to medium-sized tents. It uses LEDs instead of traditional incandescent or halogen light bulbs, allowing you to control the color, brightness, or pattern of lights via the built-in LCD panel, Master-Slave mode, or DMX control.

Small Uplight/Pinpoint \$6 (RIGHT) *SPOT-SM
RGB Par 38 Uplight (BOTTOMLEFT) \$20 *UPLIGHT

American DJ UV Panel
Blacklight, 120V covers a 20'x20' area \$40
*UVPANEL

Strobe light \$10 *STROBE



Flock a Friend!
We Will Deliver and Pick up the Flock, for \$60 plus \$0.75 per bird! Or Flock 'em yourself for \$0.75 per bird! *FLAMINGO

Party Productions & Events Rentals



Frisbee Toss Game \$6
*GAME-FRISBEE

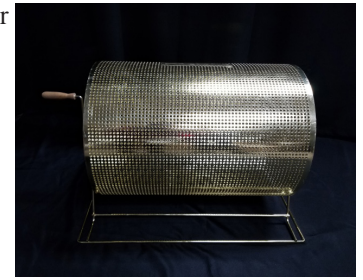


Vertical Hoop Hook Toss Game \$6 *GAME-HOOK

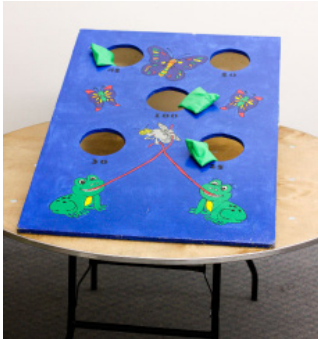


Skee-ball Game \$12 *GAME-SKEEBALL

Bingo Kit, Comes with Player Cards, Turner, Balls, Tokens & Bingo Master Board \$22 *BINGO



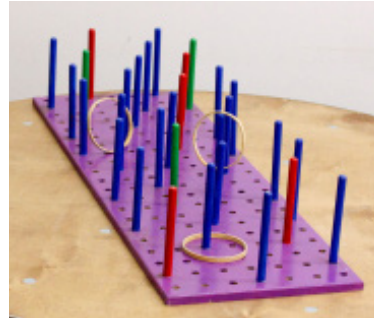
Brass Raffle Turner \$16.00 *RAFFLE



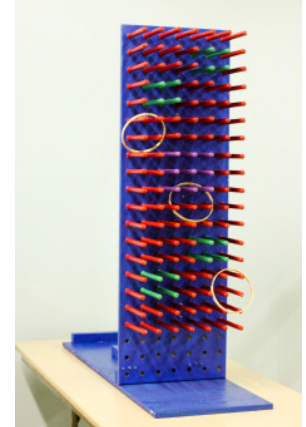
Frog Bean Bag Toss Game \$6 *GAME-BEANLG



Squirrel Bean Bag Toss Game \$7 *GAME-BEANLG



Horizontal Ring Toss Game \$7 *GAME-RINGH



Vertical Ring Toss Game \$8 *GAME-RINGV



Single Bean Bag Toss Game \$6 *GAME-BEANI



Milk Jug Toss Game \$10 *GAME-MILKJUG



Tic Tac Toe Game \$7 *GAME-TIC



Mini Golf Set \$10 *GAME-GOLF



Small Spinner \$7 *GAME-SPIN



Spinner Grand Opening \$8 *GAME-SPING



Flat Wheel Spinner 48" square \$10 *GAME-SPINL

In need of rentals we do not have?
Be sure to check out these other
businesses!

Ice Cream Machines

Fowler Repair (515)379-1703
David Beck (515)290-6849
Anderson Erikson (515)265-2521
Robin Whitehill (515)571-2691
Sweet Timez Rental (515)505-0394

Bounce Houses/Other Outdoor Fun

Add A Little Bounce (515)408-2420
Dugan Party Rentals (515)587-7393
Duck King Fun (515)408-9544