



Party Productions & Events!

Catering/Serving

Rentals

Rental items may be reserved by filling out a rental contract and paying the total rental fee in advance. All rentals require a credit or debit card number as an insurance deposit for the items. Once all items are returned in the proper condition nothing is done with the card and that record will be destroyed. Length of rental is negotiable, depending on the items being rented, and the date/time/location of the event.

Late return of all rental merchandise is subject to \$10.00 each day the rental merchandise is not returned. If you call to let us know you'll be late before hand there will be no fee. All items are to be returned in a satisfactory and clean condition (ex. no wax on items) and in their original boxes.

Renters are to take good care of all rental merchandise and use it properly. Renters also need to verify that all items are there, and in good condition. The renter is also responsible to reimburse Party Productions for any rental merchandise that is lost, destroyed, damaged beyond repair, or stolen prior to its return.

The renter must pay Party Productions the required amount for the repair or replacement of rental merchandise, if such rental merchandise is damaged in any manner prior to its return.

Let us know if you would like to get a contract started. If you choose to start a contract for rentals over \$100 we will require a 35% , non- refundable deposit of the total cost to be paid at the time of reservation. The remaining balance of reservation cost will be payable within 10 days prior to the event. If you have any questions or concerns please feel free to contact us through email or by phone.

All conditions, terms, and prices are subject to change without notice.

1919 1st Ave North, Fort Dodge, IA 50501 • 515-576-5544 • 800-747-1169

partypro@partyproiowa.com

www.partyproiowa.com



**Galvanized Igloo
Drink Dispenser**
10gal- \$20
5gal- \$12 3gal- \$9
*IGLOO1,2,3



**5 Gallon Clear Beverage
Dispenser *DISP5CLEAR**
\$20



**Bunn 2 Burner Coffee
Maker \$10.00 *BUNN2**
Also Available, a 3 burner!
\$12.00 *BUNN3



100 Cup Coffee Maker
\$10.00
*COFFEE-100



**30 Cup Coffee
Maker \$7.00**
*COFFEE-30



10 Gallon
*DISP10 \$15
2.5 Gallon
*DISP2 \$10

**5 Gallon Hot Cold
Beverage Dispenser \$12**
*DISP5 (pictured)



**Hot Beverage
Dispenser Chafing
Fuel \$10.00**
*HOTBEV



**Faberware 55 Cup Coffee
Maker \$9.00**
*COFFEE-55



**3 Gallon Clear Acrylic
Beverage Dispenser**
*DISP3CLEAR \$12

**Drink Dispenser
2 Compartment
Insulated \$15**
*DISPENSE2



Party Productions & Events Rentals

*Each Chafing Dish Rental includes: Stand, Water Pan, Food Pan & Lid. Additional Food Pans can be rented at \$3.00 each. Divided Pans are also available. *PANHALF, *PANFULL*



Full Size Chafing Dish \$15.00
5 quart
*CHAF-FULLSIZE

Round Chafing Dish \$15.00
*CHAF-RND

Chafing Dish with Pots for Soup or Sauce \$16.00
*CHAF-POTS

Modern Chafing Dish with Pots for Soup or Sauce \$16.00
*CHAF-POTS



Flat Round Chafing Dish \$14.00
12"wide 4"deep
*CHAF-RNDFLAT



Square Chafing Dish \$14.00
12"wide 4"deep
*CHAF-SQUARE



Electric Soup Kettle \$16.00
*SOUPKETTLE



Tall Chafing Dish Soup \$15.00
*CHAF-SOUP



Electric Heat Lamp \$16.00
*HEATLAMP

NOTE: Absolutely No Pulp can be run through these fountains!
Liquid must be at least 4" Deep. Must run on flat surface.



Three Tier Mirror Stand \$25
Top 11.25"x17.5", Middle 24"x 15", Bottom 30.5" 20"
Holds 110 cupcakes
*MIRRORSTAND-3



Ice Bucket with Stand \$7.50
*ICEBUCKETSS,
*ICEBUCKETSSILVER \$3.50 for Bucket only.
Clear Champagne Bucket (not Shown) \$4.00
*ICEBUCKETCLR



Metal 2 Tiered Tray \$5.00
8" Tall, 8.5" wide bot, 6" wide top.
*TRAYTIER



Chocolate Fountain \$20.00
Holds 3-5lbs of Chocolate
*CHOCFOUNT



Plastic Pitcher \$2.00
*PITCHERPL



Aluminum Tiered Cake Stands
9" \$4.00 *CAKESTAND-9
11" \$5.00 *CAKESTAND-11
13" \$6.00 *CAKESTAND-13



Anchor Hocking Glass Tiered Platter
10" \$5.00 *PLATTER10-GL
13" \$6.00 *PLATTER13-GL



Plastic Food Tray \$10
*TRAY-PLST2



Plastic Black 48oz Thermal Pitcher \$5.00
*PITCHER-THERM



Wilton 6 Tier Dessert Stand \$25
3 Tier \$15
Holds 120 cupcakes
*CUPCAKE *CUPCAKE-HALF



Glass Cake Stand 2pc 10" wide \$5.00
*CAKESTAND-GL



Glass Cake Pedestal \$4.00
4.5" Or 8.5" wide
*CAKEPEDESTAL-GL



Silver Cake Stand \$6.00
*CAKESTAND-SIL

Party Productions & Events Rentals



Popcorn Machine \$35.00
*POPCORN



Popcorn Machine Cart \$10.00
*POPCART



Cotton Candy Machine \$40.00
*COTTONCANDY



Snow Cone Machine \$35
*SNOWCONE



Snow Cone Machine Ice Grinder \$35
*SNOWCONE-IG



50ct Hot Dog Roller \$45 *HOTDOG-50
20ct Hot Dog Roller \$35 *HOTDOG-20

We Can Crush Ice for YOU! \$5 per 10lb. Must bring your own container.



Cambro Food Carriers \$15 each *CAMBRO
Cambro Dollie \$5
*CAMBRODOLLIE



Cold Master with 1/3 Size Pans \$12.50
*COLDMAST-RECT13



Cold Master with 1/2 Size Pans \$12.50
*COLDMAST-RECT12
Also available, Full size \$12.50
*COLDMAST-FL



Cold Master Quart Size \$8.00
*COLDMAST-QT



Deep Freeze Ice Cream \$50.00
*ICECREAMFREEZER



18 Quart Roaster \$16.00
*ROASTER



Cambro Tabletop 5' Salad Bar \$15.00
*CAMBROTABLE



Keg/Cooler Cart \$15.00
*KEG/COOLER



Beverage Table White/Black \$25.00
*BEVTABLE



Cambro Food Carrier Larger \$18
*CAMBRO2



Ice Chest \$35
*ICECHEST
Black BarCambro \$45.00
*BARBLACK2



Salt and Pepper Shakers Set \$0.75
*SALTSHAKERSSET



Black Bar 6'x30"x39.5", on casters, \$50 c
*BARBLACK



2 Gallon Gold Fountain \$25 *FOUNT-2GAL,
7 Gallon Fountain \$35 *FOUNT-7GAL,
3.5 Gallon Fountain \$30 *FOUNT-3.5GAL



Silver Punch Bowl Asst Styles \$20 *PUNCH-SILVER



Condiment Holder Centerpiece \$3.50 *CONDIMENTHOLDER



Silver Teapot \$6.00 *TEAPOT



Galvanized Tubs \$7.00 *TUBGAL



12 QT Plastic Bowl with Vine Design \$4.00 *VINEBOWL-12



5 Gallon Plastic Punch Bowl with Ladle \$8.00 *PUNCH-S



13" Gold or Silver Charger \$1.00 *CHARGER



Insulated 13x18x27 Beverage Bin \$15.00 *BEVBIN



Insulated Barrel Drink Holder \$15.00 *BARRELDRIK



10 Gallon Plastic Punch Bowl with Ladle \$12.00 *PUNCH-L

Galvanized Tub on Stand \$10.00 *TUBGALSTAND



Glass Plates, Bowls, Cups *Dish \$6.00 10ct single style



Butter Warmer \$1.75 *BUTTERWARMER



Steak Knives 10ct single style \$5.00 *STEAKKN



Small Glass Bowl 2.5" Tall, 4" Wide \$0.75 ea. *BOWL



Silver Butter Dish \$2.00 *BUTTERDISH



Shell Cracker (Lobster/Crab) \$1.75 *SHELLCRACKER



Metal Cream Servers \$0.80 ea. *CREAMSERVER



Utensils 10ct single style \$5.00 *UTENSIL



Shrimp Bowl 4.5" Tall, 5" Wide \$1.00 ea. *BOWL-SHRIMP



Covered Oval Serving Dish 2" Deep aprox 11" Wide \$4.00 *COVEREDDISH

Glass Appetizer/Dessert Tray \$4.00 *TRAY
 ALSO AVAIL:
Decorative Glass Cup \$0.50ea *CUP



Silver Frosted Garden Bowl Stands \$2.00 w/Dish \$1.50 Just Stand *GARDENBOWLSTAND



Glass Punch Bowls with Ladle L-R Styles A, B, C, all \$10 *PUNCH-GLASS



Asst Glass Punch/Serving Bowls \$8.00 *SERVINGBOWL

Party Productions & Events Rentals



Sundae Cup
\$1.00 ea.
*SUNDAECUP

Sherbert Plain Stem \$0.75
*SHERBERT-PLAIN

Sherbert Bubble Stem \$0.75
*SHERBERT-BUBBLE

Sherbert Fancy \$0.80
*SHERBERT-FANCY

XL Champagne Glass \$4.00 ea.
*CHAMPAGNE-XL

Mason Jar Mug \$1.00 ea.
*MASONMUG

1 Liter Carafe \$1.00 ea.
*LITERCARAFE



25 oz. Brandy Snifter \$0.75 ea.
*BRANDY-SM
ALSO AVAIL:
70oz Brandy Snifter \$4ea
*BRANDY-XXL



Hurricane Glass \$1.00 ea.
*HURRICANEGLASS



Martini Glass \$0.75 ea.
*MARTINI



Traditional Margarita Glass 9oz \$0.75 ea.
*MARGARITA



Magana Grande Glass 27.5 oz \$0.75 ea.
*MAGANA



Coffee Cup Glass \$0.60 ea.
*CUP-COFFEE



Punch Cup \$0.60 ea.
*CUP-PUNCH



10 oz. Water Goblet \$0.75 ea.
*WATERGOBLET



Winchester Water Goblet \$0.85 ea.
*WINCHEST-WATER



Winchester Wine Goblet \$0.85 ea.
*WINCHEST-WINE



Wine Glass Bubble Stem 9oz \$0.75 ea.
*WINEBUBBLE



Red Wine Glass 10oz \$0.75 ea.
*WINERED10



Wine Glass For Bar 6oz \$0.75 ea.
*WINEBAR



Wine Glass 6oz \$0.75 ea.
*WINE6



6.5 oz. Wine Glass (pictured) \$0.75 ea.
*WINE6.5

Also Available
10 oz. Wine Glass \$0.75 ea. *WINE10
4 oz. Wine Glas \$0.65 *WINE4



Glass Beer Mug \$0.75
*BEERMUG



Pilsner 9oz \$0.75
*PILSNER



Bamboo Glass \$0.75
*GLASSBAMBOO



Arctic Highball \$0.85
*HIGHBALL



Nob Hill Glass \$0.75
*NOBHILL



Large Wine Glass w/ Metal Swirl \$0.85
*WINESWIRL



Bubble Stem Rhine Wine 4oz \$0.65
*WINERHINE



Double Handled Glass \$0.80
*SUGARHOLDER



Footed On The Rocks \$0.75
*FOOTEDROCKS



Champagne Plain Stem \$0.75
*CHAMPANGE-PLAIN



Champagne Bubble Stem \$0.75
*CHAMPANGE-BUB



6 oz. Champagne Flute Tulip \$0.75 ea.
*CHAMPAGNE-TULIP



6 oz. Champagne Flute \$0.75 ea.
*CHAMPAGNE-6



4.5z Champagne Glass \$0.65 ea.
*CHAMPAGNE-4



Round Planter \$1.50 ea.
*ROUNDPLANT
www.partyproiowa.com



Candy Dish Heart \$1.00
*HEARTDISH



Octagon Compote \$1.00
*OCTCOMPOTE

Party Productions & Events Rentals



8" Circular Silver Tray
\$3.00
*SILVTRAY-C1



10" Circular Silver Tray
\$3.00
*SILVTRAY-C1



12" Circular Silver Tray
\$5.00
*SILVTRAY-C2



12" Circular Silver Tray
\$5.00
*SILVTRAY-C2



14.5" Circular Silver Tray
\$6.00
*SILVTRAY-C3



15" Circular Silver Tray
\$6.00
*SILVTRAY-C3



16" Circular Silver Tray
\$8.00
*SILVTRAY-C4



16.5" Circular Silver Tray
\$8.00
*SILVTRAY-C4



18.5" Circular Silver Tray
\$10.00
*SILVTRAY-C5



22" Circular Silver Tray
\$12.00
*SILVTRAY-C6



14"x10.5" Silver Tray w/Handles
\$8.00
*SILVTRAY-R1



18"x14" Silver Tray w/Handles
\$10.00
*SILVTRAY-R2



19"x 14" Silver Tray w/Handles
\$12.00
*SILVTRAY-R3



Oval Silver Serving Platter
25x21 \$5 *PLATTERSILV



19"x 14" Silver Tray w/Handles
\$12.00
*SILVTRAY-R3



23"x16" Silver Tray w/Handles
\$14.00
*SILVTRAY-R4



Note: sizing does not include handles. All handled trays have little feet on the underside. Sizing may vary within an inch. They are real silver plated and some trays do have designs on surface.



Stainless Steel Trays
20" for \$5.00 and 25" for \$6.00 (only 2 available)
*TRAY-STEEL



Silver Punch/Serving Bowls
2.5" tall 4" wide \$2.00
3.5" tall 6" wide \$3.50
5.5" tall 10" wide \$5.50
6.5" tall 12" wide \$7.00
*SILVBOWL-1, 2, 3, 4



Silver Serving/Food Bowl 1.5" tall 6.5" wide
\$3.00
*SILVBOWL5



13.5" Square Silver Beaded Tray
\$3.00
*SILVSQTray13



Small Metal Pedestal Bowl
5.5" Tall, 2" Deep, 6.5" Wide
\$2.00 *PEDESTALBOWL



11" Square Silver Beaded Bowl
\$3.00
*SILVSQBOWL11



Party Productions & Events! **Rentals** Decorations & Misc

Rental items may be reserved by filling out a rental contract and paying the total rental fee in advance. All rentals require a credit or debit card number as an insurance deposit for the items. Once all items are returned in the proper condition nothing is done with the card and that record will be destroyed. Length of rental is negotiable, depending on the items being rented, and the date/time/location of the event.

Late return of all rental merchandise is subject to \$10.00 each day the rental merchandise is not returned. If you call to let us know you'll be late before hand there will be no fee. All items are to be returned in a satisfactory and clean condition (ex. no wax on items) and in their original boxes.

Renters are to take good care of all rental merchandise and use it properly. Renters also need to verify that all items are there, and in good condition. The renter is also responsible to reimburse Party Productions for any rental merchandise that is lost, destroyed, damaged beyond repair, or stolen prior to its return.

The renter must pay Party Productions the required amount for the repair or replacement of rental merchandise, if such rental merchandise is damaged in any manner prior to its return.

Let us know if you would like to get a contract started. If you choose to start a contract for rentals over \$100 we will require a 35% , non- refundable deposit of the total cost to be paid at the time of reservation. The remaining balance of reservation cost will be payable within 10 days prior to the event. If you have any questions or concerns please feel free to contact us through email or by phone.

All conditions, terms, and prices are subject to change without notice.

1919 1st Ave North, Fort Dodge, IA 50501 • 515-576-5544 • 800-747-1169
 partypro@partyproiowa.com www.partyproiowa.com



Round, Swirl, Frosted, Roly Poly, Square, Oyster, Tall Tapered, Square Faceted, Flower Pot, Round Cylinder Votive \$0.60 ea. Silver, Copper, Gold Mercury Spotted & Rose Gold Textured Votives \$0.75 ea. *VOTIVE *VOTICEMERC



Geometric, Flared Lined, Fluted Ribbed, Brilliant, Heart, Pointed Frost Votive Holder \$0.60 ea. *VOTIVE2



Angle Lights \$0.75 ea. Floating Votive Holder \$0.60 ea. *ANGLELIGHT, *VOTIVEFLOAT



Ribbed Taper Candle or Piller Candle Holder \$0.60 *TAPERHOLDER



Footed Votive Insert for Candle Holders \$0.60 *FOOTEDVOTIVE



6", 12" 18" Votive Holders \$5.00 ea. *SETB



Cupcake or Votive Candle Stand \$5 *CUPCAKE/VOTIVE



Floating Candle Holder \$1.00 each *FLOATCAND

Party Productions & Events Rentals



0", 8.75", 7.5", 9.5"
" Glass Cylinders Cylinder Vase
.1.00 ea. \$1.00
CYL6, *CYL7.5, *CYL9
CYL8.75, *CYL10



3.5"x20"
Cylinder Vase
\$3.00
*CYL20



TABLE
PLACECARD
HOLDER 12"
\$0.50 ea
*PLACECARDHOLD



Metal Vase
28.5" TALL
\$4.00
*VASEMET



24" Eiffel Tower
Vase \$4.00
*VASEEIFFEL



G6 Vase 28" Tall
(flowers not included)
\$5.00
*VASEG6



Bud Vases Asst \$0.50 ea.
*VASE



6"x4.75" Sq Glass Vase \$2.00
*VASESQ6X4.75

4.5" x 9.625" Sq Glass Vase
\$3.00 *VASESQ9X4.75

12"x4.75" Sq Glass Vase
\$4.00 *VASESQ12X4.75

Ribbed or Reg Wine Bottle
\$1.00*BOTTLETRIB



Octagonal
Planter
\$1.00 ea.
*OCTA-PLANT



Medium
5 3/4" Bowl
\$1.00 ea.
*BOWL5



3.75"x6" Sq Glass Vase \$2.00
*VASESQ6X3.75

3.75"x8.25" Sq Glass Vase \$2.00
*VASESQ8X3.75

3.75" x 10.25" Sq Glass Vase \$3
*VASESQ10X3.75

3.75"x14" Sq Glass Vase \$4.00
*VASESQ14X3.75



Octagon
Compote
\$1.00
*OCTCOMPOTE



Bubble Rose
Bowl \$1.00 ea.
*ROSEBUBBLE



Candy Dish Heart
\$1.00 *HEARTDISH



Globe Frosted
Striped Bowl
\$3.00
*BOWLFROST



Milk Bottle
\$0.75 ea
*BOTTLEMILK



Bubble Bowl
\$1.00 ea.
*BUBBLEBOWL



Swirl Rose Bowl, Fluted Rose
Bowl & Fish Bowl \$1.00 ea.
*ROSESWIRL, *ROSEFLUTE,
*BOWLFISH



8" Swirl Hurricane
\$3 *HURRICANE8S
8" Clear Hurricane
\$3 *HURRICANE8



12" Hurricane
\$4
*HURRICANE12



Open Hurricane
\$2.00 ea.
*HURRICANEOPEN



Open
Cylinder
\$1.00 ea.
*CYLOPEN



2.3" (60) \$0.65



2.75" (70) \$0.65



3" (60) \$0.75

Mini Vases



4.75" (96) \$0.75



7" (96) \$0.75



8" (64) \$0.75



3" (72) \$0.75



3.25" (144) \$0.75



3.5" (96) \$0.75



4" (96) \$0.75



4.25" (72) \$0.75



4.5" (48) \$0.75



more items
coming soon

Ivory Lantern \$4.00 - 14"
White small lantern \$3.00 - 9.5"
White large lantern \$4.00 - 14"
Black Lantern \$4.00 - 11"

*LANTERN SM
*LANTERN LG



Stake Lantern
\$4.00 Each
*LANTERN STAKE



Mesh Backed Oval
Mirrors \$2.00
*MIRROR-OVALMESH



Shaped Mirrors \$2.00 ea.
Round *MIRROR-CIRCLE
Octagon *MIRROR-OCT
Square 12" *MIRROR-SQ
Heart *MIRROR-HEART



Small 5" Mirror
\$1.25 ea.
Round or Square
*MIRROR-SM

Party Productions & Events Rentals



Balloon Centerpiece Stand decorated base. Balloons can be any color. \$6.00
*BALLOONCENTER



Loomie Dish Centerpiece decorated, white or ivory base. Balloons can be any color. \$8.00 *LOOMIE



Mailbox Card Box \$35.00
*MAILBOX



Wishing Well Card Box \$15.00
*WELL-W



Tabletop Candelabras
\$5.00 each \$8.00 a Pair
*CANDLTABLE



Kneeling Benches
\$25 for the pair
*KNEELBENCH



Treasure Chest Card Box \$20
*CARDBOX-TREASURE



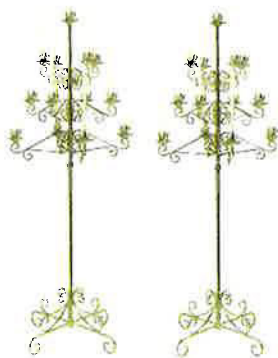
Card Box \$15 *CARDBOX

Candelabra Rental prices do not include cost of candles. Taper candles are available in 10" or 12", available in your choice of color. Votive candles are white in clear containers. Votive sets come with a holder for candle. Cylinder for round taper candles are an additional \$1.00 each.



Brass Fan Candelabra *BRASSFAN
\$12.00

6 Candle Add-on Fan
\$4.00 *FANADDON



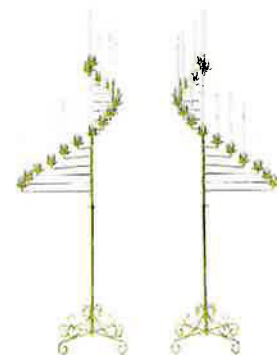
Brass Tree Candelabra Pair
\$16.00
*CANDLETREE



Candle Lighters
Single \$4.00
Pair \$6.00
*CANDLIGHTER



Single Brass Candelabra
\$4.00 *CANDLE SINGLE



Brass Spiral Candelabra Pair
*CANDLSPIRAL \$12.00
Spiral & Fan Combination
\$20.00
*CANDLFAN

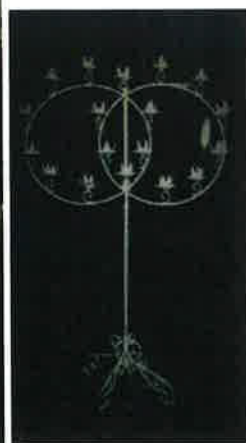


Brass/ Silver/ White Finish Angled 7 candle Candelabra

\$7.00 *CANDLEANGLE
www.partyproiowa.com



Brass Aisle Candelabras
\$6ea \$10 pair
*CANDLAISLE



Brass Double Ring Candelabra Pair/Double Heart
\$15.00
*CANDLRINGDOUBLE



Brass Heart Candelabra
\$10.00
*CANDLHEART

Party Productions & Events Rentals



**LED Water Activated
floating 1.5" White Tealight or
3" Ivory Candle
(Batteries Included)
\$0.50 ea.*LED1.5T
\$0.75 ea.*LED3F**



**LED 12" Taper Candles
(Batteries Included) \$1.25 each
*LEDTAPER**



**LED 5" Pillar Candles
(Batteries Included) \$1.50 each
*LEDPILLAR**



**3 Candle Lotus
Centerpiece \$1.00 ea.
*3CANDL**



**2.75"x2.25"
Pedestal
Candle Holder



**Asst. Taper
Holders \$0.50
*TAPERHOLDER**



**Glass Unity
Candle Set
\$3.00 set
*UNITY**



**Glass Candle
Sticks
\$0.75 each
*CANDLESTICK**



**3 Candle Candleabra in
White/Gold
\$5.00 *CANDLEABRA3**



**LED 3x4" Pillar Candles
(Batteries Included) \$0.75 each
*LEDPILLAR3x4**

**more items
coming soon**



***MASON8 Jam 8oz Mason
Jar \$0.50**

***MASON16 16oz Mason Jar
Clear/Blue \$0.80**

***MASON32 32oz Mason Jar
Clear/Blue \$1.00**



**3.25x5.25 Bubble
Mason Jar**



**Mason Jar Tea Light Holder
Silver or Gold .30 ea.
*TEALIGHTHOLD**

**Glittering Gold
& Silver Mason
Jars \$1.00ea
*MASONGOLD
*MASONSILV**

Party Productions & Events Rentals



2 - Piece Tiered or Swirl Acrylic Bead Chandelier
\$12.00 *CHAND



Wooden Tabletop Easel
\$5.00
*EASELTABLE



Metal Tabletop Easel
\$5.00
*EASELTABLE



Presentation Easel
\$7.00 *EASEL



Wooden Charger
Reg: \$2.00
Small: \$1.00
*WOODCHARGE1
*WOODCHARGE2

LED Moonlights 4.5'
Submersible with reduced battery life 7-8 hours. Generally 12 hours of light.
\$1.75 *LEDMOONLIT



Birdcage Card Box
\$45*CARDBOX-BIRD



Black Wooden Easel
\$5.00 *EASEL2



Lighted Branches
\$3.00
*LIGHTBRANCH



Gold Branch Bundles
\$4.00 *GOLDBRANCH



Fiber Optic \$2.00 ea.
*FIBEROP



\$15 6' LED Light Up Tree
\$20 8' LED Light Up Tree
*LIGHTTREE1 *LIGHTTREE2



Silver Warm Light up Ribbon \$5 each
*RIBBONLIGHT



Table Top Spotlight 5.5" Tall \$5 each
*TABLESPOT



Trifold Picture Holder Frame \$20
*PHOTOFRAME

Light Up Sign
"Mr&Mrs" or
"Mr&Mr" or "Mrs&Mrs"
\$8.00
*MRMRLIGHT



Party Productions & Events Rentals



Wicker Bridal Register Podium \$12.00
*PODIUMWICKER



Wicker Flower Basket \$6.00
*WICKERBASKET



Round Wicker Flower Holder (asst sizes) \$8.00
*WICKERFLOWER



Industrial Fan
*FANINDUS \$35.00

Indoor or Under Tent Use ONLY



Gold Frame Hard Plastic \$8.00
*FRAME



Wood Crates (asst sizing) \$5.00
*CRATE



4' White Rustic Leaning Ladder



Chalk Board Sign \$12.00
*CHALKSIGN



Metal Ornate Arch \$40.00
*ARCHORNATE

Metal Arch White or Gold \$30.00
*ARCHMET



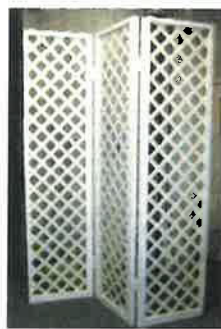
Whiskey Barrel Stand \$35.00
(Cakes in photo by Hummingbird Confections)
*WHISKEYBARREL



Double Panel
1 Panel 4' x 8',
2 Panels
*LATTICE DOUBLE



1-2-1 Panel
*LATTICE121



3-Way Panel
*LATTICE3

Undecorated Lattice Wall All 3 Styles
\$30.00 a Section



Lattice Arch \$40.00
80" Tall, 38" Deep, 60" Wide
*ARCHLATTICE



Theatrical Arch \$40.00 *ARCHTH

Party Productions & Events Rentals



Rent a 10'x10' tent frame only and decorate for a canopy look.
 \$100 plus delivery and pickup
 *TENTFRAME
 Larger sizes available!



White Pedestal Foam 36" \$5.00
 *PEDESTALWH



Assorted Theatrical Planted Bushes \$5.00
 *FICATREE



36" Chandelier available in multiple colors and styles.
 \$5.00 *CHANDEL
 4, 6, or 8 foot stands \$5.00
 *CHANDSTAND
 A tube covered in mylar \$10
 *CHANDSTAND-MYLAR



Palm Tree 6'9" \$15.00
 *PALMTREE



Wedding Canopy
 Includes, 4 bases, 4 tubes, lights and sheers \$50.00
 *WEDDCANOPY



76" Illuminated Column Pair \$26.00 (pictured) *COLUMN76
36" Illuminated Column Pair \$22.00
 *COLUMN36



Black Barstool
 \$6.00 each *BARSTOOL



Tiki Bar Less Elaborate \$50.00
 *TIKIBAR2



Theatrical Silver & Black Pedestal
 \$7.00ea, \$5 ea for the pair
 *PEDESTALSB



Theatrical Bar Stools
 6 Available, Rotating, Black and Silver \$6.00
 *BARSTOOL



Tiki Bar
 (Uses 9/16" wrench)
 \$100.00 *TIKIBAR1



Rent a star wall for behind the head table or near the dance floor. Each Star Balloon \$3.00 ea.
 *MYLARSTAR



Sheer Lit Columns
 \$25.00 per pair
 *SHERCOL



Life Preserver Prop
 \$3.00 *TH-PROP

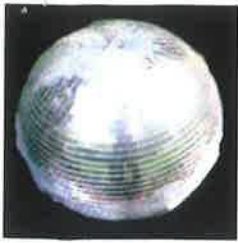


Wooden Prop Stairs \$6.00
 *STEPWOOD



Wood Podium \$10.00
 *PODIUMWOOD

Party Productions & Events Rentals



16" Disco Ball & Turner \$25
*DISCO
16" Mirror Ball, Turner, & Pin Spotlight \$29
*DISCO-SPOT



Ceiling Turner \$3.00
*SPINNER



Q-Line metal bases & rope off \$15.00
per set,
*QLINE2

Q-Line metal bases & tape \$18.00
per set,
*QLINE3

Theatrical White & Silver Rose Bench \$20
*BENCH



Q-Line plastic bases & rope off \$10.00
per set, *Velvet rope also available
*QLINE



Red Carpet Runner approx 35' \$15
*REDCARP

Red Carpet Runner 3'x50' \$50
*REDCARP50



Projector Screen \$6.50
*SCREENPRO



Wooden Bench Theatrical \$15
*TH-PROP



Balloon Column \$6 for Stand
32 11" Latex
*BALLOONCOLUMN



Air Machine \$12.00
*AIRMEN



A. Ice Sculpture Tray & Expander B. Lighted Base
To rent the set \$30. Lighted base with plastic tray on top to hold ice with a drain to remove water as it melts. Ice molds sold separately.
*ICETRAY LG, *ICETRAY SM
To rent a tray only \$15



Button Machine \$15
*BUTTON MACHINE
Button Parts 2" \$1.00
BUTTON PC
Button Parts 3" \$1.50



Bubble Machine with Fill \$15.00
*BUBBLEMEN Extra Fill \$5.00
*BUBBLEJU



Fog Machine \$35.00 *FOGMACHINE
Extra Fluid Fill:
Gallon \$38.00 #FG04X
32oz \$10.65 #FG04X-32
16oz \$5.95 #G04X-16
8oz \$2.96 #FG04X-8



Custom Balloon Arch \$12 for stand only Takes approx. 132- 11" Balloons
Call for Pricing.
*BALLOONARCH

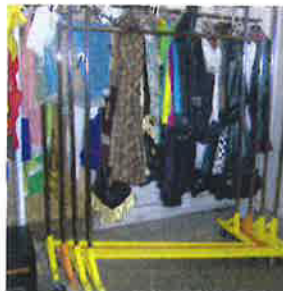


Custom Heart Balloon Stand \$20 for stand only Takes approx. 80 11" Balloon or 355 5" Call for Pricing.
*HEART



Snow Machine Kit Includes: Hurricane II Fan, Little Blizzard Machine, Remote Control, Universal DMX, Clamps & Cables to hang it
*SNOW \$500.00

To rent Little Blizzard Alone: \$300.00
*SNOWFLUID Liquid Snow: \$58.90



Z-Shaped Extendable Clothes Racks (59" long, 68"-78" tall) \$10.00 *ZRACK
Also Available, Round, 4-prong, and Rectangular Clothes Rack \$10
*RACKCLOTHES



Flock a Friend!
We Will Deliver and Pick up the Flock, for \$50 plus \$0.50 per bird!
Or Flock 'em yourself for \$0.50 per bird! *FLAMINGO

Party Productions & Events Rentals



Frisbee Toss Game \$5
*GAME-FRISBEE



Vertical Hoop Hook Toss Game \$5
*GAME-HOOK

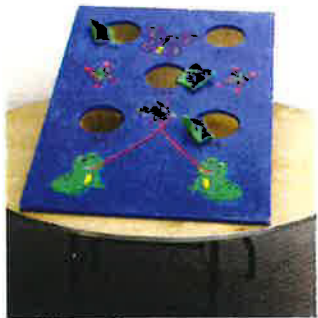


Skee-ball Game \$8
*GAME-SKEEBALL

Bingo Kit, Comes with
Player Cards, Turner, Balls,
Tokens & Bingo Master
Board \$20 *BINGO



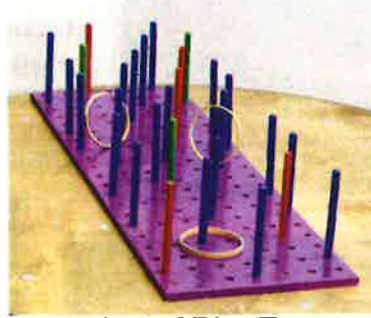
Brass Raffle Turner
\$15.00 *RAFFLE



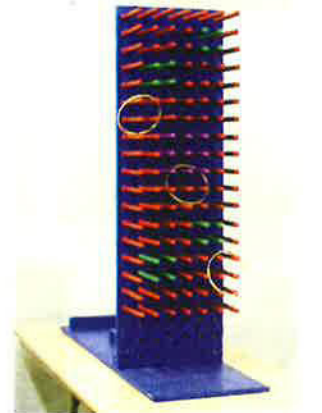
Frog Bean Bag Toss Game \$5
*GAME-BEANLG



Squirrel Bean Bag Toss Game \$5
*GAME-BEANLG



Horizontal Ring Toss Game \$5
*GAME-RINGH



Vertical Ring Toss Game
\$7 *GAME-RINGV



Single Bean Bag Toss Game \$5
*GAME-BEAN1



Milk Jug Toss Game \$7
*GAME-MILKJUG



Tic Tac Toe Game \$5
*GAME-TIC

Globe Light Strand \$25
*GLOBELIGHT



Mini Golf Set \$7 *GAME-GOLF

Small Spinner \$5
*GAME-SPIN



RGBuplight



Gobo Projector LED
\$12 - Also order your custom design for your event! *GOBO

Pinspot



Moonflower



CanLight



Flat Wheel Spinner
48" square \$10 *GAME-SPINL

Chauvet Vue 1.1 Sound Activated Moonflower DJ Light \$20 (LEFT) *MOONFLOWER Mood effect light, perfect for dance floors. The LED Dance Floor Light is a DMX controlled LED moonflower. It allows the user to display many different light patterns and effects. It can be run in a stand-alone mode or connected to a DMX controller for full functionality.

Chauvet 38 LED Pro Par Can Light \$12 (CENTER) *PAR38 This powerful LED light fixture is perfect for lighting small to medium-sized tents. It uses LEDs instead of traditional incandescent or halogen light bulbs, allowing you to control the color, brightness, or pattern of lights via the built-in LCD panel, Master-Slave mode, or DMX control.

Small Uplight/Pinspot \$5 (RIGHT) *SPOT-SM

RGB Par 38 Uplight (BOTTOMLEFT) \$15 *UPLIGHT

American DJ UV Panel Blacklight, 120V covers a 20'x20' area \$40 *UVPANEL

Strobe light \$10 *STROBE



Le Pouf Favor Maker
Assists in holding and tying tulle favors. \$15 *FAVORMAKER



Party Productions & Events!

Floral & Greenery

Rentals

All conditions, terms, and prices are subject to change without notice.

1919 1st Ave North, Fort Dodge, IA 50501 • 515-576-5544 • 800-747-1169
partypro@partyproiowa.com www.partyproiowa.com



Asst Silk Florals



Plastic Ivy \$1.50 a Strand
*GARLAND-IVY



Asst Fall Floral/Leaves
Loose \$3.00 per bag
*FALLFLORALBAG



White Wisteria Branches
\$0.50 Each Strand
*WISTERIA



Silk Eucalyptus Garland 6'5" With Roses
Champagne, Ivory, Cream
\$3.00 Each Strand *GARLAND-FLREUCA



Maple Leaf w/Glitter
Garland 6'
\$3.00 Each Strand
*GARLAND-MAPLE



White Wisteria Garland 7.2'
\$3.00 Each Strand
*GARLAND-WIST

GrapeVine Wreath Light Up
18" \$4.00
*LIGHTGRAPEVINE



Party Productions & Events Rentals



Lambs Ear Eucalyptus
\$3.00 Each Strand
 * GARLAND-LAMB



Plastic Eucalyptus Garland
6' \$3.00 Each Strand
 *GARLAND-PLEUCA



Silk Eucalyptus Garland 6'
\$3.00 Each Strand
 *GARLAND-SLKE



Weeping Willow Garland
\$3.00 Each Strand
 *GARLAND-WILLOW



Willow Bamboo Greenery
5.7'
\$3.00 Each Strand
 * GARLAND-BAMBOO



6.5ft/2m



Silk Eucalyptus Vine Garland 6.5'
\$3.00 Each Strand
 *GARLAND-SLKEV



Moss Greenery Garland 5'
\$3.00 Each Strand
 * GARLAND-MOSS



Springeri Greenery Garland
\$3.00 Each Strand
 *GARLAND-SPRING



Buckler Fern Draping **\$3.00 Each Strand**
 *FERNBUNCH





1919 1st Ave North, Fort Dodge, IA 50501
 515-576-5544, 800-747-1169
 partypro@partyproiowa.com
 www.partyproiowa.com



Commercial Table Linen Rentals

White, Black, Ivory, and Select Colors Table Linens **\$8.50**
 Available in Sizes: 60x102 (6' Rectangular Table), 85x85 Square, 90" Round (5' Round),
 60x126 (8' Rectangular Table) *TC60X126 *TC90R *TC60X102 *TC85X85

Black and White Gingham Napkins..... **\$0.95**
 *NAPKINGING

Commercial Linen Napkins 20"x20" **\$0.75**
 (Available in White, Black, Ivory, and Select Colors)
 *NAPKIN20X20

Banquet Chair Covers **\$2.50** Please Inquire about available colors.
 *CHAIRCOVER

Folding Chair Covers **\$2.00** (Available in Black & White)
 *CHAIRCOVER

60x120 Red & White Gingham or Black & White Gingham Linen..... **\$10.00**
 *TCGING

White & Ivory Basic Lace Banquet/Round Overlay **\$8.00**
 *TCLACE

90x156 8' Banquet Table to Floor Linen **\$13.00**
 (Including Black, White, Ivory & Select Colors)

*TCTOFLOOR8
 120" Round Linen for 5' Round to Floor or Cocktail to Floor **\$13.00**
 (Including Black, White, & Select Colors)

*TCTOFLOOR5
 Sequin to Floor Linens - Indoor Use Only- No Wax..... **\$18.00**
 *TCSEQUIN

Spandex Cocktail Linens for Highboy Table..... **\$8.00**
 (Including Black, White, Chocolate & Select Colors)
 *TCSPANDEX

Petal 120" Round Linen **\$16.00**
 *TCPETAL

Serpentine Table Linen **\$12.00**
 Linen with Topper **\$15.00**

Specialty Linen Rentals

Lace Macrame Vintage Tablecloth 51x51 **\$12.00**

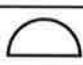
Special Order Colored 8' Banquet Linens 72"x120" or 5' Round Table Linens 90"
Please Inquire about available colors. Prices may vary.

Special Order Colored 90"x156" To Floor 8' Banquet Table Linens/120" To Floor
Please Inquire about available colors. Prices may vary.

Sequin and Specialty Linens **\$12.00 - \$20.00**
Please Inquire about available colors.



Tables and Chairs

	Day	Week	Dimensions
8' Banquet Table (30"x8') *TABLE8	\$10.00	\$15.00	30"x96"
5' Round Table (60") *TABLE5R	\$11.00	\$18.00	60"x60"
8 Chairs fit around a 5 foot table comfortably.			
Black Chair *CHAIR-BLK	\$1.50	\$3.00	
White Chair *CHAIR-WHITE	\$1.80	\$3.60	
Black Cocktail Table *COCKTAILTABLE	\$12.00	\$16.00	30"d x 40.5" h
Pedestal Table *PEDESTALTABLE	\$12.00	\$16.00	30"d x 30"h - 40.5" h
Available in Cocktail Height and Regular			
7' Serpentine Table *TABLESERP	\$12.00	\$18.00	
With Topper as Shown *SERPTOP	\$15.00	\$22.00	
Serpentine Black Linen Tablecover *SERPLINEN	\$12.00		
Topper Black Linen Tablecover *SERPLINENTOP	\$3.00		
Barstool *BARSTOOL	\$8.00	\$12.00	
5' Round Kids Table \$11.00 *TABLEKID		Kids Chairs \$0.75 *CHAIR-KID	
5' Half Circle Table  *TABLEHALF	\$7.50	Conference Table 18x72 *TABLECONF6	\$10.50
6' Round Table *TABLE6R	\$14.00	Conference Table 18x96 *TABLECONF8	\$12.00
4' Rect. Table *TABLE4	\$6.00	6' Rect. Table *TABLE6	\$8.50



Black Metal Frame Chair
 (frame is Black)
 Also available in all White



Black Barstool



Tall Pedestal Table



**Round Linen for
Cocktail to floor**



**Spandex Cocktail
Linens**

Minimum Delivery & Pickup (for Fort Dodge) is \$60.00. Delivery and pickup price is determined by location mileage and amount of items rented.



7' Serpentine Table



Heart Table \$8.00
*TABLEHEART



Black Cocktail Table



Short Pedestal Table

Tents

Let us know if you would like to get a contract started. If you choose to start a contract we will require a 35% , generally non- refundable deposit of the total cost to be paid at the time of reservation. The remaining balance of reservation cost will be payable within 10 days prior to the event. If you have any questions or concerns please feel free to contact us through email or by phone.

Tent setup & teardown included in price. Delivery charges will apply. In town delivery \$30. In town pick up is \$30. Mileage = Distance in miles x \$8.00. All delivery and pickup prices will be evaluated based on amount of items rented. For Party Productions crew to set up tables and chairs, additional fees include \$0.30/chair to setup and \$0.30/chair to tear down. For tables, \$0.60/table to setup and \$0.60/table to tear down.

Sides- Additional \$5 per side we set up, \$5 per side we tear down, \$10 for both.

Size	Price	People Capacity	Fits	Sq. Foot.
20 x 20	\$300.00	60 - 70 standing	6 - 8' Banquet Tables or	400
*TENT20X20		40 - 48 sitting	5 - 5' Round Tables	
20 x 30	\$350.00	94 - 110 standing	9 - 8' Banquet Tables or	600
*TENT20X30		48 - 72 sitting	6 - 5' Round Tables	
20 x 40	\$450.00	130 - 160 standing	12 - 8' Banquet Tables or	800
*TENT20X40		64 - 96 sitting	8 - 5' Round Tables	
40 x 40	\$950.00	267 - 320 standing	24 - 8' Banquet Tables or	1600
*TENT40X40		160 - 192 sitting	20 - 5' Round Tables	
40 x 60	\$1,350.00	400 - 480 standing	36 - 8' Banquet Tables or	2400
*TENT40X60		240 - 288 sitting	30 - 5' Round Tables	
40 x 80	\$1,750.00	534 - 640 standing	48 - 8' Banquet Tables or	3200
*TENT40X80		320 - 384 sitting	40 - 5' Round Tables	
40 x 100	\$2,150.00		60 - 8' Banquet Tables or	4000
*TENT40X100		400 - 480 sitting	50 - 5' Round Tables	
40 x 120	\$2,550.00		72 - 8' Banquet Tables or	4800
*TENT40X120		480 - 576 sitting	60 - 5' Round Tables	
40 x 140	\$2,950.00		84 - 8' Banquet Tables or	5600
*TENT40X140		560 - 672 sitting	70 - 5' Round Tables	
40 x 160	\$3,350.00		96 - 8' Banquet Tables or	6400
*TENT40X160		640 - 768 sitting	80 - 5' Round Tables	
20' Tent Sides Solid *SIDE	\$25		20' Tent Sides Windowed *SIDEWINDOW	\$30

When reserving any tent, please tell us about the location; if it is grass or asphalt, if there are trees or power lines. Holes drilled in asphalt cost \$8 per hole. Holes drilled in concrete including hardware is \$10 per hole. We refill them upon completion



40 x 60 Tent



20 x 30 Tent

Price DOES NOT include ceiling, lighting, drapes, or sides. Quotes available.



Tent with custom pole covers, ceiling & lights



20 x 20 Tent



40 x 120 Tent

Party Productions & Events!

1717 ISLAVE NORTH, FULL DODGE, IA 5050
 515-576-5544, 800-747-1164
 partypro@partyproiowa.com
 www.partyproiowa.com

Dance Floor

- 12' x 12' Dance Floor \$180.00
 (Subfloor for Outdoor Use 16x16 \$102.40)
 Holds approx 30 people
- 15' x 15' Dance Floor \$281.25
 (Subfloor for Outdoor Use 16x16 \$102.40)
 Holds approx 50 people
- 18' x 18' Dance Floor \$405.00
 (Subfloor for Outdoor Use 20x24 \$192)
 Holds approx 70 people



Breakdown is \$1.25 per square foot and \$0.40 per square foot of subflooring, dance floor comes in 3' x 3' sections. Cleaning fee included in price.

*DANCE *SUBFLOOR approx 648 1'square pieces available

Party Productions does the setup and tear down of

floor. In Town is \$50.00. Out of Town is Mileage x \$4.00

Staging

4' x 8' Stage Deck with Adjustable Legs 16", 20", or 24" & 32" - 40" \$48.00 per Section
 (\$42.00 each for quantity 12 price break)

Stairs 16" or 24" \$10.00 each



LED RGB Uplight \$15.00 each

- 40' LED White Cord Event Lights \$30.00
- 50' LED Black Cord Event Lights \$30.00

Price Quotes are available for our Tent and Event Ceilings.

Keg/Cooler Trailer

Non-Revenue Generating Events \$150 per day personal use. \$225 Revenue Generating Event (ex. Pickup Friday - Return Sunday) Additional fee will apply per additional day.
 2" Ball Hitch. 110 Volts

Trailer 1: Outside 14'6" L x 10'7" H x 8'6" W Inside 9'2" L x 8'7" H x 6'2" W Will hold approximately 30-35 kegs. There are 8 tapper spigots, 4 on each side of the trailer. 1 Tank of CO2 Provided.

Trailer #2: Outside 8'1" L x 7' H x 6'1" W Inside 7'7" L x 5'7" W Smaller trailer #2 will hold approximately 15-20 kegs. There are 4 tapper spigots, 2 on each side of the trailer. 1 Tank of CO2 Provided



In need of rentals we do not have?
Be sure to check out these other
businesses!

Ice Cream Machines

Fowler Repair (515)379-1703
David Beck (515)290-6849
Anderson Erikson (515)265-2521
Robin Whitehill (515)571-2691
Sweet Timez Rental (515)505-0394

Bounce Houses/Other OutDoor Fun

Add A Little Bounce (515)408-2420
Dugan Party Rentals (515)587-7393
Duck King Fun (515)408-9544